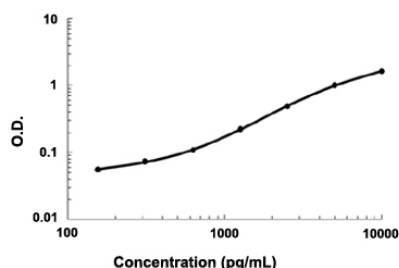


Ctla4 (Mouse) ELISA Kit

Catalog # KA3352 Size 1 Kit

Applications



The standard curve is for the purpose of demonstration only and should not be used to calculate unknowns. A standard curve should be generated each time the assay is performed.

Specification

Product Description	Ctla4 (Mouse) ELISA Kit is a sandwich enzyme immunoassay for the quantitative measurement of mouse Ctla4.
Suitable Sample	Cell Culture Supernats, Plasma (Heparin) and Serum
Sample Volume	100 μ L
Label	HRP-conjugated
Detection Method	Colorimetric
Assay Type	Quantitative
Calibration Range	156 to 10000 pg/mL
Reactivity	Mouse
Regulation Status	For research use only (RUO)
Quality Control Testing	Standard curve The standard curve is for the purpose of demonstration only and should not be used to calculate unknowns. A standard curve should be generated each time the assay is performed.
Storage Instruction	Store at 4°C for 6 months, at -20°C for 12 months. Avoid multiple freeze-thaw cycles.

Applications

- Quantification

Gene Info — Ctla4

Entrez GeneID [12477](#)

Gene Name Ctla4

Gene Alias Cd152, Ctla-4, Ly-56

Gene Description cytotoxic T-lymphocyte-associated protein 4

Gene Ontology [Hyperlink](#)

Other Designations CD152 antigen|OTTMUSP00000002168

Publication Reference

- [TIRC7 inhibits Th1 cells by upregulating the expression of CTLA-4 and STAT3 in mice with acute graft-versus-host disease.](#)

Feng Zhu, Tingting Qiu, Shengyun Zhu, Kai Zhao, Chong Chen, Jianlin Qiao, Bin Pan, Zhiling Yan, Wei Chen, Qiong Liu, Qingyun Wu, Jiang Cao, Wei Sang, Lingyu Zeng, Haiying Sun, Zhenyu Li, Kailin Xu.

Oncology Reports 2020 Apr; 44(1):43.

Application: Quant, Mouse, Mouse plasma