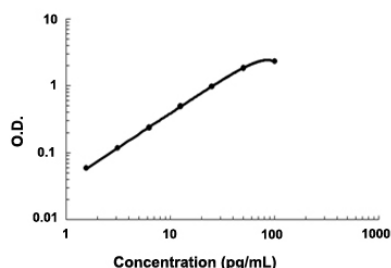


CD163 (Human) ELISA Kit

Catalog # KA3336 Size 1 Kit

Applications



The standard curve is for the purpose of demonstration only and should not be used to calculate unknowns. A standard curve should be generated each time the assay is performed.

Specification

Product Description	CD163 (Human) ELISA Kit is a sandwich enzyme immunoassay for the quantitative measurement of human CD163.
Suitable Sample	Cell Culture Supernate, Plasma (Heparin), Serum
Sample Volume	100 μ L
Label	HRP-conjugated
Detection Method	Colorimetric
Assay Type	Quantitative
Calibration Range	1.56 to 100 ng/mL
Reactivity	Human
Regulation Status	For research use only (RUO)
Quality Control Testing	Standard curve The standard curve is for the purpose of demonstration only and should not be used to calculate unknowns. A standard curve should be generated each time the assay is performed.
Storage Instruction	Store at 4°C for 6 months, at -20°C for 12 months. Avoid multiple freeze-thaw cycles.

Applications

- Quantification

Gene Info — CD163

Entrez GeneID	9332
Gene Name	CD163
Gene Alias	M130, MM130
Gene Description	CD163 molecule
Omim ID	605545
Gene Ontology	Hyperlink
Other Designations	CD163 antigen macrophage-associated antigen

Disease

- [Kidney Failure](#)
- [Tobacco Use Disorder](#)