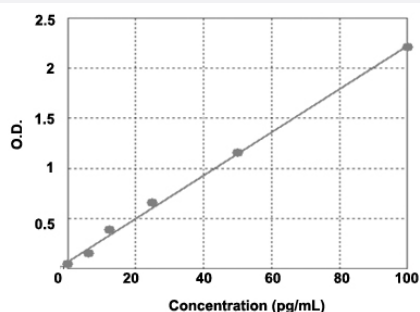


II1b (Mouse) ELISA Kit

Catalog # KA3058

Size 1 Kit

Applications



The standard curve is for the purpose of illustration only and should not be used to calculate unknowns. A standard curve should be generated each time the assay is performed.

Specification

| | |
|-------------------------|---|
| Product Description | II1b (Mouse) ELISA Kit is intended for the quantitative measurement of mouse II1b. |
| Suitable Sample | Cell Culture Supernatant, Plasma, Serum, Tissue Sample, Urine |
| Sample Volume | 10 uL |
| Label | HRP-conjugated |
| Detection Method | Colorimetric |
| Assay Type | Quantitative |
| Calibration Range | 5 to 100 pg/mL |
| Limit of Detection | 10 pg/mL |
| Reactivity | Mouse |
| Regulation Status | For research use only (RUO) |
| Quality Control Testing | Standard Curve The standard curve is for the purpose of illustration only and should not be used to calculate unknowns. A standard curve should be generated each time the assay is performed. |
| Storage Instruction | Store at 4°C for 6 months. |

Applications

- Quantification

Gene Info — Il1b

| | |
|---------------|-----------------------|
| Entrez GeneID | 16176 |
|---------------|-----------------------|

| | |
|-----------|------|
| Gene Name | Il1b |
|-----------|------|

| | |
|------------|-----------------|
| Gene Alias | IL-1beta, IL-1b |
|------------|-----------------|

| | |
|------------------|--------------------|
| Gene Description | interleukin 1 beta |
|------------------|--------------------|

| | |
|---------------|---------------------------|
| Gene Ontology | Hyperlink |
|---------------|---------------------------|

| | |
|--------------|------|
| Gene Summary | beta |
|--------------|------|

| | |
|--------------------|--|
| Other Designations | OTTMUSP00000016525 interleukin 1, beta |
|--------------------|--|