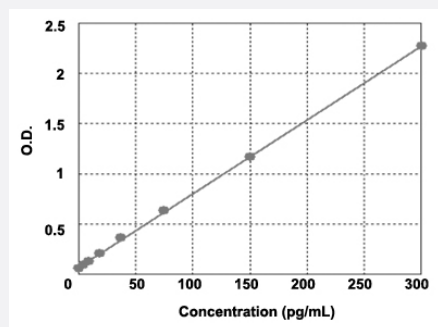


II1a (Mouse) ELISA Kit

Catalog # KA3056

Size 1 Kit

Applications



The standard curve is for the purpose of illustration only and should not be used to calculate unknowns. A standard curve should be generated each time the assay is performed.

Specification

Product Description	II1a (Mouse) ELISA Kit is intended for the quantitative measurement of mouse II1a.
Suitable Sample	Body Fluid, Cell Culture Supernate, Serum, Tissue Lysate
Sample Volume	100 uL
Label	HRP-conjugated
Detection Method	Colorimetric
Assay Type	Quantitative
Calibration Range	4.7 to 300 pg/mL
Reactivity	Mouse
Regulation Status	For research use only (RUO)
Quality Control Testing	Standard Curve The standard curve is for the purpose of illustration only and should not be used to calculate unknowns. A standard curve should be generated each time the assay is performed.
Storage Instruction	Store at 4°C for 4 months, or at -20°C for 8 months.

Applications

- Quantification

Gene Info — Il1a

Entrez GeneID	16175
---------------	-----------------------

Gene Name	Il1a
-----------	------

Gene Alias	Il-1a
------------	-------

Gene Description	interleukin 1 alpha
------------------	---------------------

Gene Ontology	Hyperlink
---------------	---------------------------

Other Designations	OTTMUSP00000016430
--------------------	--------------------