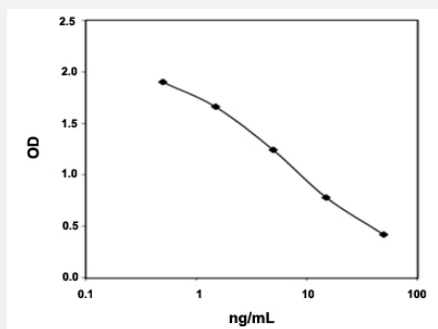


Histamine ELISA Kit

Catalog # KA2589 Size 1 Kit

Applications



The standard curve is for the purpose of illustration only and should not be used to calculate unknowns. A standard curve should be generated each time the assay is performed.

Specification

Product Description	Histamine ELISA Kit is an enzyme Immunoassay for the quantitative determination of histamine in plasma and urine.
Suitable Sample	Plasma, Urine
Sample Volume	25 uL (acylated samples)
Label	Peroxidase-conjugate
Detection Method	Colorimetric
Assay Type	Quantitative
Calibration Range	0.32 to 50 ng/mL in plasma, 0.91 to 125 ng/mL in Urine
Limit of Detection	0.19 ng/mL in plasma, 0.26 ng/mL in Urine
Regulation Status	For research use only (RUO)
Storage Instruction	Store the kit at 4°C.

Applications

- Quantification

Publication Reference

- [Food allergy promotes a Th2/Th17 response that drives house dust mite-induced allergic airway inflammation in humanized mice.](#)

Bo Wang, Jun Hu, Yi Liu, Qun Liu, Diandian Li.

Clinical and Experimental Immunology 2020 Dec; 202(3):300.

Application: Quant, Mouse, Mouse plasma

- [A prospective study of the pathophysiology of carcinoid crisis.](#)

Condrón ME, Jameson NE, Limbach KE, Bingham AE, Sera VA, Anderson RB, Schenning KJ, Yockelson S, Harukuni I, Kahl EA, Dewey E, Pommier SJ, Pommier RF.

Surgery 2019 Jan; 165(1):158.

Application: ELISA, Human, Plasma

- [Expression Patterns of Host Inflammatory Cytokine Genes during Infestation with Haemaphysalis longicornis, a Zoonotic Vector, in Blood Sucking Periods.](#)

Islam MS, You MJ.

The Korean Journal of Parasitology 2018 Feb; 56(1):53.

Application: ELISA, Rabbit, Plasma