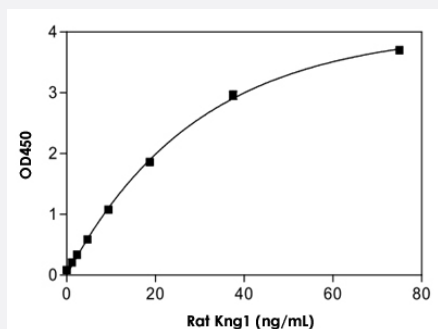


Kng1 (Rat) ELISA Kit

Catalog # KA2512 Size 1 Kit

Applications



The standard curve is for the purpose of illustration only and should not be used to calculate unknowns. A standard curve should be generated each time the assay is performed.

Specification

Product Description	Kng1 (Rat) ELISA Kit is for the quantitative measurement of Kng1 in plasma and serum.
Suitable Sample	Plasma, Serum
Sample Volume	100 uL
Label	HRP-conjugated
Detection Method	Colorimetric
Assay Type	Quantitative
Limit of Detection	1.17 to 75 ng/mL
Reactivity	Rat
Regulation Status	For research use only (RUO)
Quality Control Testing	Standard curve The standard curve is for the purpose of illustration only and should not be used to calculate unknowns. A standard curve should be generated each time the assay is performed.
Storage Instruction	Store the kit at 4°C.

Applications

- Quantification

Gene Info — Kng1

Entrez GeneID	24903
Gene Name	Kng1
Gene Alias	KINKG, KINKH, KINT1G, Kng, Kng_v1, Kngk, Kngt, Kngt1, MGC93589, TKG6, Tkg
Gene Description	kininogen 1
Gene Ontology	Hyperlink
Gene Summary	differential splicing leads to HMW Kngk LMW T-kininogen I T-kininogen 1
Other Designations	K-kininogen, differential splicing leads to HMW Kngk LMW T-kininogen I T-kininogen 1