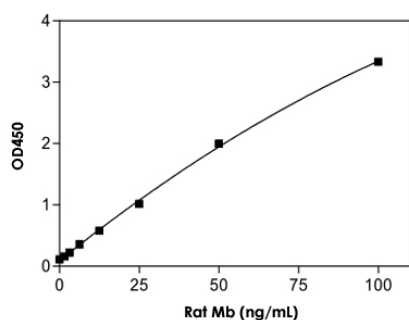


# Mb (Rat) ELISA Kit

Catalog # KA2510      Size 1 Kit

## Applications



The standard curve is for the purpose of illustration only and should not be used to calculate unknowns. A standard curve should be generated each time the assay is performed.

## Specification

<b>Product Description</b>	Mb (Rat) ELISA Kit is for the quantitative measurement of Mb in plasma, serum and urine.
<b>Suitable Sample</b>	Plasma, Serum, Urine
<b>Sample Volume</b>	20 uL
<b>Label</b>	HRP-conjugated
<b>Detection Method</b>	Colorimetric
<b>Assay Type</b>	Quantitative
<b>Limit of Detection</b>	1.56 to 100 ng/mL
<b>Reactivity</b>	Rat
<b>Regulation Status</b>	For research use only (RUO)
<b>Quality Control Testing</b>	Standard curve The standard curve is for the purpose of illustration only and should not be used to calculate unknowns. A standard curve should be generated each time the assay is performed.
<b>Storage Instruction</b>	Store Lyophilized Standard at -20°C. Store all other components at 4°C.

## Applications

- Quantification

## Gene Info — Mb

Entrez GeneID	<a href="#">59108</a>
---------------	-----------------------

Gene Name	Mb
-----------	----

Gene Alias	-
------------	---

Gene Description	myoglobin
------------------	-----------

Gene Ontology	<a href="#">Hyperlink</a>
---------------	---------------------------

Other Designations	-
--------------------	---