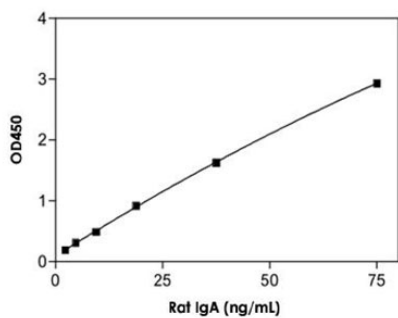


# IgA (Rat) ELISA Kit

Catalog # KA2506      Size 1 Kit

## Applications



The standard curve is for the purpose of illustration only and should not be used to calculate unknowns. A standard curve should be generated each time the assay is performed.

## Specification

<b>Product Description</b>	IgA (Rat) ELISA Kit is for the quantitative measurement of IgA in rat serum, plasma, and other fluids.
<b>Suitable Sample</b>	Plasma, Serum, and other fluids.
<b>Sample Volume</b>	100 uL (diluted samples)
<b>Label</b>	HRP-conjugated
<b>Detection Method</b>	Colorimetric
<b>Assay Type</b>	Quantitative
<b>Calibration Range</b>	2.34 to 75 ng/mL
<b>Reactivity</b>	Rat
<b>Regulation Status</b>	For research use only (RUO)
<b>Quality Control Testing</b>	Standard curve The standard curve is for the purpose of illustration only and should not be used to calculate unknowns. A standard curve should be generated each time the assay is performed.
<b>Storage Instruction</b>	Store the kit at 4°C.

## Applications

- Quantification