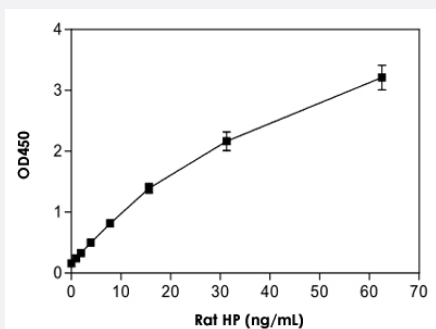


# HP (Rat) ELISA Kit

Catalog # KA2505      Size 1 Kit

## Applications



The standard curve is for the purpose of illustration only and should not be used to calculate unknowns. A standard curve should be generated each time the assay is performed.

## Specification

Product Description	HP (Rat) ELISA Kit is for the quantitative measurement of HP in plasma and serum.
Suitable Sample	Plasma, Serum
Sample Volume	100 uL
Label	HRP-conjugated
Detection Method	Colorimetric
Assay Type	Quantitative
Calibration Range	0.98 to 62.5 ng/mL
Reactivity	Rat
Regulation Status	For research use only (RUO)
Quality Control Testing	Standard curve The standard curve is for the purpose of illustration only and should not be used to calculate unknowns. A standard curve should be generated each time the assay is performed.
Storage Instruction	Store the kit at 4°C.

## Applications

- Quantification

## Gene Info — Hp

Entrez GeneID	<a href="#">24464</a>
---------------	-----------------------

Gene Name	Hp
-----------	----

Gene Alias	Ba1-647
------------	---------

Gene Description	haptoglobin
------------------	-------------

Gene Ontology	<a href="#">Hyperlink</a>
---------------	---------------------------

Other Designations	-
--------------------	---