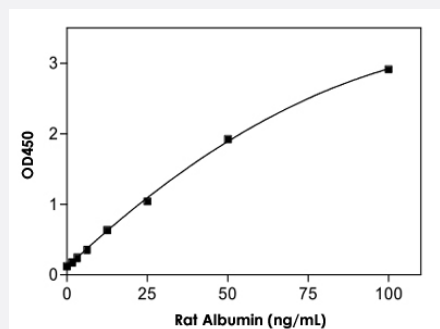


Albumin (Rat) ELISA Kit

Catalog # KA2491 Size 1 Kit

Applications



The standard curve is for the purpose of illustration only and should not be used to calculate unknowns. A standard curve should be generated each time the assay is performed.

Specification

Product Description	Albumin (Rat) ELISA Kit is for the quantitative measurement of Albumin in serum.
Suitable Sample	Serum
Sample Volume	100 uL
Label	HRP-conjugated
Detection Method	Colorimetric
Assay Type	Quantitative
Limit of Detection	1.56 to 100 ng/mL
Reactivity	Rat
Regulation Status	For research use only (RUO)
Quality Control Testing	Standard curve The standard curve is for the purpose of illustration only and should not be used to calculate unknowns. A standard curve should be generated each time the assay is performed.
Storage Instruction	Store the kit at 4°C.

Applications

- Quantification

Gene Info — Alb

Entrez GeneID	24186
---------------	-----------------------

Gene Name	Alb
-----------	-----

Gene Alias	Alb1, Albza
------------	-------------

Gene Description	albumin
------------------	---------

Gene Ontology	Hyperlink
---------------	---------------------------

Other Designations	-
--------------------	---