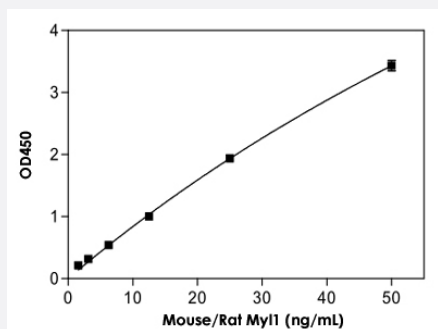


# Myl1 (Mouse/Rat) ELISA Kit

Catalog # KA2489

Size 1 Kit

## Applications



The standard curve is for the purpose of illustration only and should not be used to calculate unknowns. A standard curve should be generated each time the assay is performed.

## Specification

<b>Product Description</b>	Myl1 (Mouse/Rat) ELISA Kit is for the quantitative measurement of Myl1 in plasma and serum.
<b>Suitable Sample</b>	Plasma, Serum
<b>Sample Volume</b>	100 uL
<b>Label</b>	HRP-conjugated
<b>Detection Method</b>	Colorimetric
<b>Assay Type</b>	Quantitative
<b>Limit of Detection</b>	1.56 to 50 ng/mL
<b>Reactivity</b>	Rat
<b>Regulation Status</b>	For research use only (RUO)
<b>Quality Control Testing</b>	Standard curve The standard curve is for the purpose of illustration only and should not be used to calculate unknowns. A standard curve should be generated each time the assay is performed.
<b>Storage Instruction</b>	Store the kit at 4°C.

## Applications

- Quantification

## Gene Info — Myl1

Entrez GeneID	<a href="#">17901</a>
Gene Name	Myl1
Gene Alias	AI325107, MLC1f, MLC3f, Mylf
Gene Description	myosin, light polypeptide 1
Gene Ontology	<a href="#">Hyperlink</a>
Gene Summary	O
Other Designations	A1 catalytic A2 catalytic OTTMUSP00000032275 fast skeletal myosin alkali light chain 1 myosin li ght chain, alkali, fast skeletal muscle myosin, light polypeptide 1, alkali; atrial, embryonic myosin, li ght polypeptide 4, alkali; atrial, embryonic

## Gene Info — Myl1

Entrez GeneID	<a href="#">56781</a>
Gene Name	Myl1
Gene Alias	MLC3-f, MLCf, Mcl3, Mlc1, Mlc3
Gene Description	myosin, light polypeptide 1
Gene Ontology	<a href="#">Hyperlink</a>
Gene Summary	I
Other Designations	fast myosin alkali light chain fast myosin alkali light chain 1 fast myosin alkali light chain 3