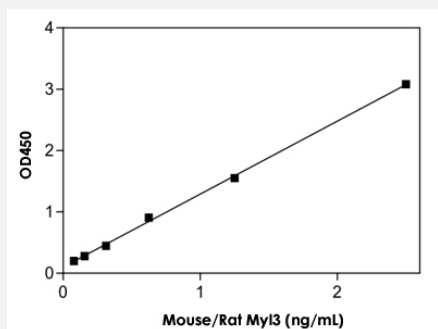


Myl3 (Mouse/Rat) ELISA Kit

Catalog # KA2488

Size 1 Kit

Applications



The standard curve is for the purpose of illustration only and should not be used to calculate unknowns. A standard curve should be generated each time the assay is performed.

Specification

Product Description	Myl3 (Mouse/Rat) ELISA Kit is for the quantitative measurement of Myl3 in plasma and serum.
Suitable Sample	Plasma, Serum
Sample Volume	100 uL
Label	HRP-conjugated
Detection Method	Colorimetric
Assay Type	Quantitative
Calibration Range	0.078 to 2.5 ng/mL
Reactivity	Rat
Regulation Status	For research use only (RUO)
Quality Control Testing	Standard curve The standard curve is for the purpose of illustration only and should not be used to calculate unknowns. A standard curve should be generated each time the assay is performed.
Storage Instruction	Store the kit at 4°C.

Applications

- Quantification

Gene Info — Myl3

Entrez GeneID	17897
Gene Name	Myl3
Gene Alias	MLC1s, MLC1v, Mylc, VLC1
Gene Description	myosin, light polypeptide 3
Gene Ontology	Hyperlink
Gene Summary	O
Other Designations	OTTMUSP00000017767 myosin light chain, alkali, cardiac ventricles myosin, light polypeptide 3, alkali; ventricular, skeletal, slow slow skeletal ventricular

Gene Info — Myl3

Entrez GeneID	24585
Gene Name	Myl3
Gene Alias	MGC93574, Mylc1v
Gene Description	myosin, light chain 3, alkali; ventricular, skeletal, slow
Gene Ontology	Hyperlink
Gene Summary	Myl3
Other Designations	Myosin light chain 3, alkali, cardiac ventricles myosin, light polypeptide 3