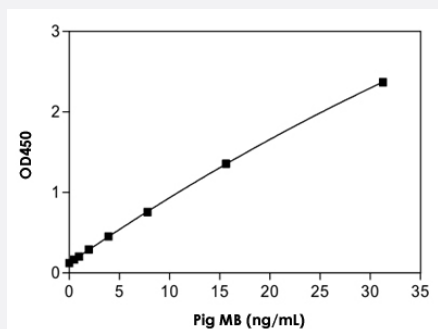


# MB (Pig) ELISA Kit

Catalog # KA2483      Size 1 Kit

## Applications



The standard curve is for the purpose of illustration only and should not be used to calculate unknowns. A standard curve should be generated each time the assay is performed.

## Specification

Product Description	MB (Pig) ELISA Kit is for the quantitative measurement of plasma, serum and urine.
Suitable Sample	Plasma, Serum, Urine
Sample Volume	20 uL
Label	HRP-conjugated
Detection Method	Colorimetric
Assay Type	Quantitative
Calibration Range	0.49 to 31.25 ng/mL
Reactivity	Pig
Regulation Status	For research use only (RUO)
Quality Control Testing	Standard curve The standard curve is for the purpose of illustration only and should not be used to calculate unknowns. A standard curve should be generated each time the assay is performed.
Storage Instruction	Store Lyophilized Standard at -20°C. Store all other components at 4°C.

## Applications

- Quantification

## Gene Info — MB

Entrez GeneID	<a href="#">397467</a>
---------------	------------------------

Gene Name	MB
-----------	----

Gene Alias	-
------------	---

Gene Description	myoglobin
------------------	-----------

Gene Ontology	<a href="#">Hyperlink</a>
---------------	---------------------------

Other Designations	-
--------------------	---