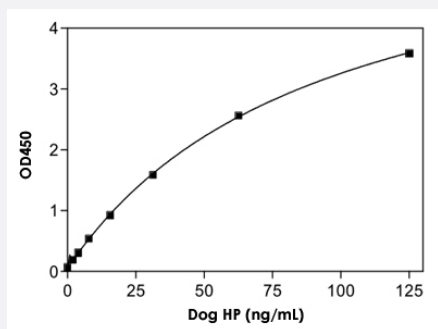


# HP (Dog) ELISA Kit

Catalog # KA2432

Size 1 Kit

## Applications



The standard curve is for the purpose of illustration only and should not be used to calculate unknowns. A standard curve should be generated each time the assay is performed.

## Specification

<b>Product Description</b>	HP (Dog) ELISA Kit is for the quantitative measurement of HP in plasma and serum.
<b>Suitable Sample</b>	Plasma, Serum
<b>Sample Volume</b>	100 $\mu$ L
<b>Label</b>	HRP-conjugated
<b>Detection Method</b>	Colorimetric
<b>Assay Type</b>	Quantitative
<b>Limit of Detection</b>	1.95 to 125 ng/mL
<b>Reactivity</b>	Dog
<b>Regulation Status</b>	For research use only (RUO)
<b>Quality Control Testing</b>	Standard curve The standard curve is for the purpose of illustration only and should not be used to calculate unknowns. A standard curve should be generated each time the assay is performed.
<b>Storage Instruction</b>	Store the kit at 4°C.

## Applications

- Quantification

## Gene Info — HPR

Entrez GeneID	<a href="#">479668</a>
---------------	------------------------

Gene Name	HPR
-----------	-----

Gene Alias	-
------------	---

Gene Description	haptoglobin-related protein
------------------	-----------------------------

Gene Ontology	<a href="#">Hyperlink</a>
---------------	---------------------------

Other Designations	-
--------------------	---