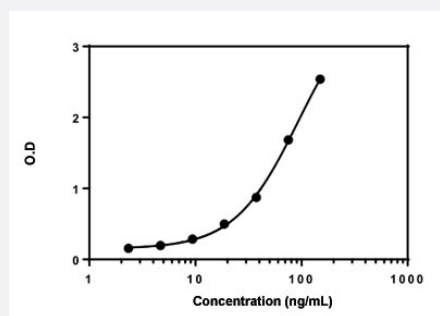


Alpha-1-Acid Glycoprotein (Chicken) ELISA Kit

Catalog # KA2423 Size 1 Kit

Applications



The standard curve is for the purpose of illustration only and should not be used to calculate unknowns. A standard curve should be generated each time the assay is performed.

Specification

Product Description	Alpha-1-Acid Glycoprotein (Chicken) ELISA Kit is a sandwich enzyme-linked immunosorbent assay for the quantitative measurement of chicken alpha-1-acid glycoprotein.
Suitable Sample	Serum
Sample Volume	100 μ L
Label	HRP-conjugated
Detection Method	Colorimetric
Assay Type	Quantitative
Calibration Range	2.34 to 150 ng/mL
Reactivity	Chicken
Regulation Status	For research use only (RUO)
Quality Control Testing	Standard curve The standard curve is for the purpose of illustration only and should not be used to calculate unknowns. A standard curve should be generated each time the assay is performed.
Storage Instruction	Store the kit at 4°C.

Applications

- Quantification

Gene Info — ORMDL1

Entrez GeneID [423981](#)

Gene Name ORMDL1

Gene Alias -

Gene Description ORM1-like 1 (S. cerevisiae)

Gene Ontology [Hyperlink](#)

Other Designations -

Publication Reference

- [Effect of microbial muramidase supplementation in diets formulated with different fiber profiles for broiler chickens raised under various coccidiosis management programs.](#)

Cristiano Bortoluzzi, Estefania Perez-Calvo, Peter B Olsen, Sharon van der Vaart, Ellen van Eerden, Jerome Schmeisser, Irene Eising, Phokela Segobola, José-Otávio B Sorbara.

Poultry Science 2023 Oct; 102(10):102955.

Application: ELISA, Chicken, Chicken serum