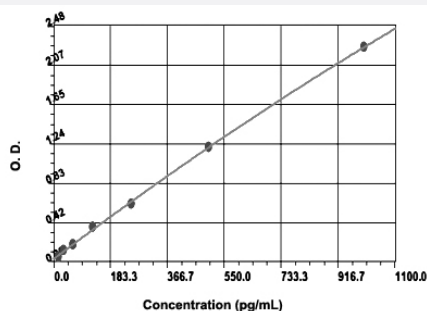


Ccl5 (Mouse) ELISA Kit

Catalog # KA2001 Size 1 Kit

Applications



The standard curve is for the purpose of illustration only and should not be used to calculate unknowns. A standard curve should be generated each time the assay is performed.

Specification

Product Description	Ccl5 (Mouse) ELISA Kit is a sandwich enzyme immunoassay for the quantitative measurement of mouse Ccl5.
Suitable Sample	Body Fluid, Cell Culture Supernatant, Plasma, Serum, Tissue Lysate
Sample Volume	100 μ L
Label	HRP-conjugated
Detection Method	Colorimetric
Assay Type	Quantitative
Calibration Range	15.6 to 1000 pg/mL
Reactivity	Mouse
Regulation Status	For research use only (RUO)
Quality Control Testing	Standard Curve The standard curve is for the purpose of illustration only and should not be used to calculate unknowns. A standard curve should be generated each time the assay is performed.
Storage Instruction	Store at 4°C for 6 months, at -20°C for 12 months. Avoid multiple freeze-thaw cycles.

Applications

- Quantification

Gene Info — Ccl5

Entrez GeneID	20304
Gene Name	Ccl5
Gene Alias	MuRantes, RANTES, SISd, Scya5, TCP228
Gene Description	chemokine (C-C motif) ligand 5
Gene Ontology	Hyperlink
Other Designations	OTTMUSP00000000943 small inducible cytokine A5