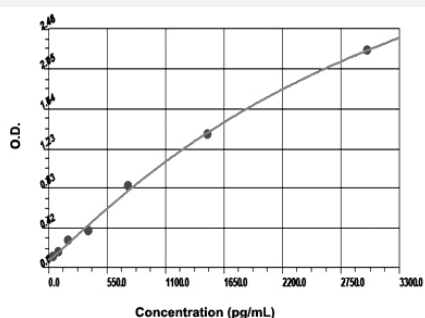


Epo (Mouse) ELISA Kit

Catalog # KA1998

Size 1 Kit

Applications



The standard curve is for the purpose of illustration only and should not be used to calculate unknowns. A standard curve should be generated each time the assay is performed.

Specification

Product Description	Epo (Mouse) ELISA Kit is a sandwich enzyme immunoassay for the quantitative measurement of mouse Epo.
Suitable Sample	Cell Culture Supernatant, Plasma (heparin), Serum
Sample Volume	100 μ L
Label	HRP-conjugated
Detection Method	Colorimetric
Assay Type	Quantitative
Calibration Range	46.9 to 3000 pg/mL
Reactivity	Mouse
Regulation Status	For research use only (RUO)
Storage Instruction	Store at 4°C for 6 months, at -20°C for 12 months. Avoid multiple freeze-thaw cycles.

Applications

- Quantification

Gene Info — Epo

Entrez GeneID	13856
Gene Name	Epo
Gene Alias	-
Gene Description	erythropoietin
Gene Ontology	Hyperlink
Other Designations	OTTMUSP00000024624 OTTMUSP00000024625

Publication Reference

- [A novel approach to adenine-induced chronic kidney disease associated anemia in rodents.](#)
Rahman A, Yamazaki D, Sufiun A, Kitada K, Hitomi H, Nakano D, Nishiyama A.
PLoS One 2018 Feb; 13:1.
Application: ELISA, Mouse, Rat, Plasma
- [The novel proteasome inhibitor BSc2118 protects against cerebral ischaemia through HIF1A accumulation and enhanced angioneurogenesis.](#)
Doepfner TR, Mlynarczuk-Bialy I, Kuckelkorn U, Kaltwasser B, Herz J, Hasan MR, Hermann DM, Bähr M.
Brain 2012 Nov; 135(Pt 11):3282.
Application: ELISA, Mouse, Brain