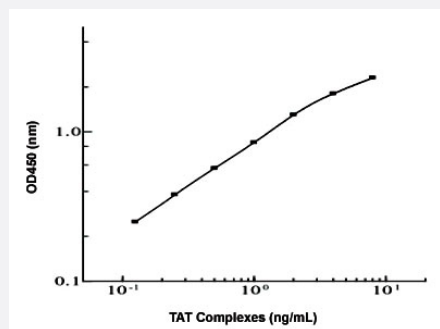


TAT Complexes (Mouse) ELISA Kit

Catalog # KA1857 Size 1 Kit

Applications



The standard curve is for the purpose of illustration only and should not be used to calculate unknowns. A standard curve should be generated each time the assay is performed.

Specification

Product Description	TAT Complexes (Mouse) ELISA Kit is a sandwich enzyme immunoassay for the quantitative measurement of mouse TAT Complexes.
Suitable Sample	Cell Culture Supernatant, Plasma
Sample Volume	50 μ L
Label	Peroxidase-conjugated
Detection Method	Colorimetric
Assay Type	Quantitative
Calibration Range	0.031 to 8 ng/mL
Reactivity	Mouse
Regulation Status	For research use only (RUO)
Storage Instruction	Store components of the kit at 4°C or -20°C as described in the protocol.

Applications

- Quantification

Publication Reference

- [Endothelial cell-anchored tissue factor pathway inhibitor regulates tumor metastasis to the lung in mice.](#)

Wang J, Xiao J, Wen D, Wu X, Mao Z, Zhang J, Ma D.

Molecular Carcinogenesis 2015 May; 55(5):882.

Application: ELISA, Mouse, Plasma