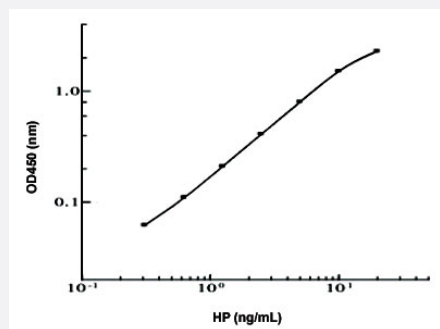


HP (Canine) ELISA Kit

Catalog # KA1853 Size 1 Kit

Applications



The standard curve is for the purpose of illustration only and should not be used to calculate unknowns. A standard curve should be generated each time the assay is performed.

Specification

Product Description	HP (Canine) ELISA Kit is a sandwich enzyme immunoassay for the quantitative measurement of canine HP.
Suitable Sample	Cell Culture Supernatant, Plasma
Sample Volume	50 μ L
Label	Peroxidase-conjugated
Detection Method	Colorimetric
Assay Type	Quantitative
Intra-Assay	5%
Inter-Assay	7.1%
Spiking Recovery	96%
Reactivity	Dog
Regulation Status	For research use only (RUO)

Quality Control Testing

Standard Curve

The standard curve is for the purpose of illustration only and should not be used to calculate unknowns. A standard curve should be generated each time the assay is performed.

Storage Instruction

Store components of the kit at 4°C or -20°C as described in the protocol.

Applications

- Quantification

Gene Info — HP

Entrez GeneID	100144610
---------------	---------------------------

Gene Name	HP
-----------	----

Gene Alias	-
------------	---

Gene Description	haptoglobin
------------------	-------------

Gene Ontology	Hyperlink
---------------	---------------------------

Other Designations	-
--------------------	---