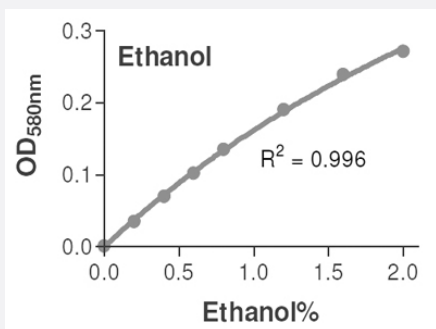


Ethanol Assay Kit

Catalog # KA1646 Size 1 Kit

Applications



The standard curve is for the purpose of illustration only and should not be used to calculate unknowns. A standard curve should be generated each time the assay is performed.

Specification

Product Description	Ethanol Assay Kit is a colorimetric determination of ethanol at 580 nm.
Suitable Sample	Alcohol containing samples, such as yeast cultures and beverages (e.g. wine, beer).
Sample Volume	100 uL for using 96-well plate 400 uL for using cuvette
Detection Method	Colorimetric
Calibration Range	0.04 to 2% (in 96-well plate assay)
Regulation Status	For research use only (RUO)
Quality Control Testing	Standard Curve The standard curve is for the purpose of illustration only and should not be used to calculate unknowns. A standard curve should be generated each time the assay is performed.
Storage Instruction	Store reagents at room temperature and the ethanol standard at 4°C.

Applications

- Functional Study