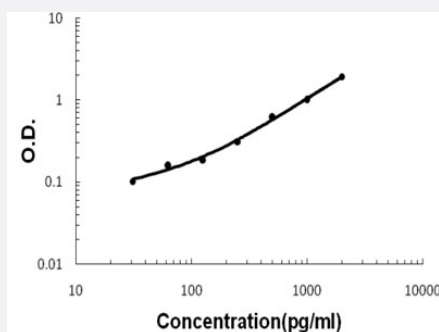


II1b (Rat) ELISA Kit

Catalog # KA1502 Size 1 Kit

Applications



The standard curve is for the purpose of illustration only and should not be used to calculate unknowns. A standard curve should be generated each time the assay is performed.

Specification

Product Description	II1b (Rat) ELISA Kit is a sandwich enzyme immunoassay for the quantitative measurement of rat II1b.
Suitable Sample	Cell Culture Supernatant, Cell Lysates, Plasma (EDTA, Heparin), Serum
Sample Volume	100 uL
Label	HRP-conjugated
Detection Method	Colorimetric
Assay Type	Quantitative
Calibration Range	31.2 to 2000 pg/mL
Reactivity	Rat
Regulation Status	For research use only (RUO)
Storage Instruction	Store at 4°C for 6 months, at -20°C for 12 months. Avoid multiple freeze-thaw cycles.

Applications

- Quantification

Gene Info — Il1b

Entrez GeneID	24494
Gene Name	Il1b
Gene Alias	-
Gene Description	interleukin 1 beta
Gene Ontology	Hyperlink
Gene Summary	beta
Other Designations	interleukin 1, beta

Publication Reference

- [The effects of mandibular osteotomy on maxillary orthodontic tooth movement and bone remodelling in a rat model.](#)

Yingchen Ji, Yi Tang, Qing Wu, Danqing Huang, Jie Zhu, Feiwu Kang.

European Journal of Orthodontics 2020 Sep; cjaa053.

Application: Quant, Rat, Rat serum

- [A diet based on cured acorn-fed ham with oleic acid content promotes anti-inflammatory gut microbiota and prevents ulcerative colitis in an animal model.](#)

Fernández J, de la Fuente VG, García MTF, Sánchez JG, Redondo BI, Villar CJ, Lombó F.

Lipids in Health and Disease 2020 Feb; 19(1):28.

Application: Quant, Rat, Rat plasma