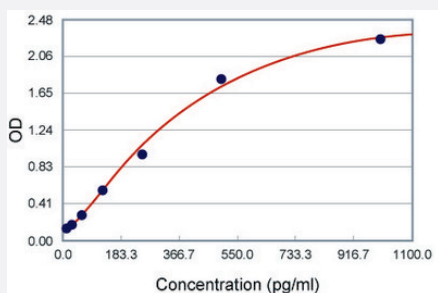


# II13 (Rat) ELISA Kit

Catalog # KA1408      Size 1 Kit

## Applications



The standard curve is for the purpose of illustration only and should not be used to calculate unknowns. A standard curve should be generated each time the assay is performed.

## Specification

<b>Product Description</b>	II13 (Rat) ELISA Kit is a sandwich enzyme immunoassay for the quantitative measurement of rat II13.
<b>Suitable Sample</b>	Cell Culture Supernates, Cell Lysates, Plasma (Heparin, EDTA), Serum
<b>Sample Volume</b>	100 uL
<b>Label</b>	HRP-conjugated
<b>Detection Method</b>	Colorimetric
<b>Assay Type</b>	Quantitative
<b>Calibration Range</b>	15.6 to 1000 pg/mL
<b>Reactivity</b>	Rat
<b>Regulation Status</b>	For research use only (RUO)
<b>Storage Instruction</b>	Store at 4°C for 6 months, at -20°C for 12 months. Avoid multiple freeze-thaw cycles.

## Applications

- Quantification

## Gene Info — Il13

Entrez GeneID	<a href="#">116553</a>
Gene Name	Il13
Gene Alias	-
Gene Description	interleukin 13
Gene Ontology	<a href="#">Hyperlink</a>
Other Designations	-

## Publication Reference

- [A DNA vaccine candidate delivered by an electroacupuncture machine provides protective immunity against SARS-CoV-2 infection.](#)

Tsai-Teng Tzeng, Kit Man Chai, Kuan-Yin Shen, Chia-Yi Yu, Shiu-Ju Yang, Wan-Chun Huang, Hung-Chun Liao, Fang-Feng Chiu, Horng-Yunn Dou, Ching-Len Liao, Hsin-Wei Chen and Shih-Jen Liu.

Nature Partner Journals Vaccines 2022 Jun; 7(1):60.

Application: ELISA, Mouse, mouse splenocyte