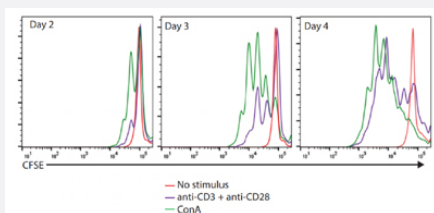


CFSE Cell Division Assay Kit

Catalog # KA1302 Size 1 Kit

Applications

Flow Cytometry



CD4⁺ T cells proliferate in response to T cell receptor antibodies and mitogenic stimuli. Murine splenocytes were labeled with CFSE according to the protocol in this booklet. Labeled cells were cultured with no stimulus (red histogram), plate-bound anti-CD3 with soluble anti-CD28 (both 1 ug/mL; purple histogram) or Concanavalin A (5 ug/mL; green histogram). At the indicated time points, cells were stained with fluorochrome-conjugated anti-CD4 and analyzed on a Miltenyi MACSQuant cytometer. FlowJo analysis software was used to gate on CD4⁺ T cells and generate the overlaid histogram plots.

Specification

Product Description	CFSE Cell Division Assay Kit is a fluorescence-based method for tracing cell divisions.
Regulation Status	For research use only (RUO)
Storage Instruction	Store the kit at -20°C. For best results, please store the components as described in the protocol. Avoid repeated freezing and thawing.

Applications

Flow Cytometry

CD4⁺ T cells proliferate in response to T cell receptor antibodies and mitogenic stimuli. Murine splenocytes were labeled with CFSE according to the protocol in this booklet. Labeled cells were cultured with no stimulus (red histogram), plate-bound anti-CD3 with soluble anti-CD28 (both 1 ug/mL; purple histogram) or Concanavalin A (5 ug/mL; green histogram). At the indicated time points, cells were stained with fluorochrome-conjugated anti-CD4 and analyzed on a Miltenyi MACSQuant cytometer. FlowJo analysis software was used to gate on CD4⁺ T cells and generate the overlaid histogram plots.