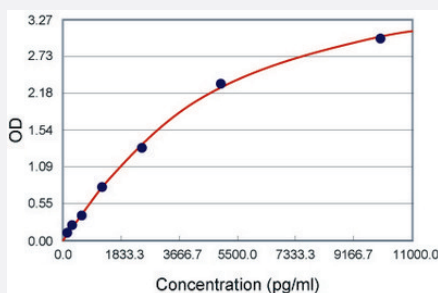


# Cdh1 (Mouse) ELISA Kit

Catalog # KA1069      Size 1 Kit

## Applications



The standard curve is for the purpose of illustration only and should not be used to calculate unknowns. A standard curve should be generated each time the assay is performed.

## Specification

<b>Product Description</b>	Mouse Cdh1 ELISA kit is a sandwich enzyme immunoassay for the quantitative measurement of mouse Cdh1.
<b>Suitable Sample</b>	Body Fluid, Cell Culture Supernatant, Serum, Tissue Lysate
<b>Sample Volume</b>	100 $\mu$ L
<b>Label</b>	HRP-conjugated
<b>Detection Method</b>	Colorimetric
<b>Assay Type</b>	Quantitative
<b>Calibration Range</b>	156 to 10000 pg/mL
<b>Reactivity</b>	Human, Mouse
<b>Regulation Status</b>	For research use only (RUO)
<b>Quality Control Testing</b>	Standard curve The standard curve is for the purpose of illustration only and should not be used to calculate unknowns. A standard curve should be generated each time the assay is performed.
<b>Storage Instruction</b>	Store at 4°C for 6 months, at -20°C for 12 months. Avoid multiple freeze-thaw cycles.

## Applications

- Quantification

## Gene Info — Cdh1

Entrez GeneID	<a href="#">12550</a>
Gene Name	Cdh1
Gene Alias	AA960649, Ecad, L-CAM, MGC107495, UVO, Um
Gene Description	cadherin 1
Gene Ontology	<a href="#">Hyperlink</a>
Other Designations	E-cadherin OTTMUSP00000022465 uvomorulin