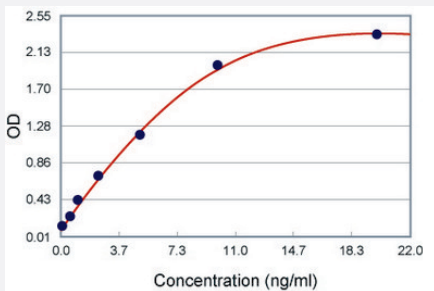


Cst3 (Mouse) ELISA Kit

Catalog # KA1060 Size 1 Kit

Applications



The standard curve is for the purpose of illustration only and should not be used to calculate unknowns. A standard curve should be generated each time the assay is performed.

Specification

Product Description	Mouse Cst3 ELISA kit is a sandwich enzyme immunoassay for the quantitative measurement of mouse Cst3.
Suitable Sample	Cell Culture Supernatant, Plasma (EDTA, Heparin), Serum and Urine
Sample Volume	100 μ L
Label	HRP-conjugated
Detection Method	Colorimetric
Assay Type	Quantitative
Calibration Range	312 to 20000 pg/mL
Reactivity	Mouse
Regulation Status	For research use only (RUO)
Storage Instruction	Store at 4°C for 6 months, at -20°C for 12 months. Avoid multiple freeze-thaw cycles.

Applications

- Quantification

Gene Info — Cst3

Entrez GeneID	13010
Gene Name	Cst3
Gene Alias	CysC
Gene Description	cystatin C
Gene Ontology	Hyperlink
Other Designations	OTTMUSP00000016736 cystatin 3

Publication Reference

- [Swiprosin-1 Promotes Mitochondria-Dependent Apoptosis of Glomerular Podocytes via P38 MAPK Pathway in Early-Stage Diabetic Nephropathy.](#)

Wang RM, Wang ZB, Wang Y, Liu WY, Li Y, Tong LC, Zhang S, Su DF, Cao YB, Li L, Zhang LC.

Cellular Physiology and Biochemistry 2018 Feb; 45:899.

Application: ELISA, Mouse, Serum

- [LY333531, a PKC \$\beta\$ inhibitor, attenuates glomerular endothelial cell apoptosis in the early stage of mouse diabetic nephropathy via down-regulating swiprosin-1.](#)

Wang ZB, Zhang S, Li Y, Wang RM, Tong LC, Wang Y, Liu WY, Su DF, Tu Y, Zhang LC, Li L.

Amino Acids 2017 Apr; 38(7):1009.

Application: Quant, Mouse, Mouse serum