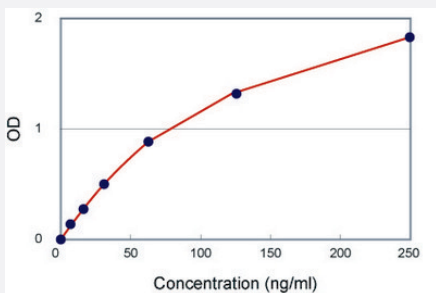


IgG2b (Mouse) ELISA Kit

Catalog # KA1012 Size 1 Kit

Applications



The standard curve is for the purpose of illustration only and should not be used to calculate unknowns. A standard curve should be generated each time the assay is performed.

Specification

Product Description	IgG2b (Mouse) ELISA Kit is a colorimetric immunometric enzyme immunoassay kit for the quantitative measurement of mouse IgG2b in culture supernatants and serum of mouse origin.
Suitable Sample	Serum, Tissue Culture Medium
Sample Volume	50 μ L
Label	HRP-conjugate
Detection Method	Colorimetric
Assay Type	Quantitative
Calibration Range	7.81 to 250 ng/mL
Limit of Detection	1.05 ng/mL
Reactivity	Mouse
Regulation Status	For research use only (RUO)
Quality Control Testing	Standard curve The standard curve is for the purpose of illustration only and should not be used to calculate unknowns. A standard curve should be generated each time the assay is performed.

Storage Instruction

Store the kit at 4°C.

Applications

- Quantification