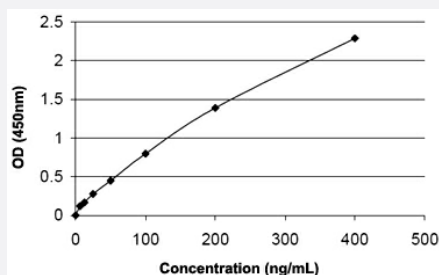


# HAMA (Human) ELISA Kit

Catalog # KA1010

Size 1 Kit

## Applications



The standard curve is for the purpose of illustration only and should not be used to calculate unknowns. A standard curve should be generated each time the assay is performed.

## Specification

<b>Product Description</b>	HAMA (Human) ELISA Kit is a sandwich enzyme immunoassay for the quantitative measurement of human anti-mouse antibody.
<b>Suitable Sample</b>	Serum
<b>Sample Volume</b>	100 $\mu$ L
<b>Label</b>	HRP-conjugate
<b>Detection Method</b>	Colorimetric
<b>Assay Type</b>	Quantitative
<b>Intra-Assay</b>	9.03%
<b>Inter-Assay</b>	8.30%
<b>Calibration Range</b>	3 to 360 ng/mL
<b>Limit of Detection</b>	3 ng/mL
<b>Reactivity</b>	Human
<b>Regulation Status</b>	For research use only (RUO)

**Quality Control Testing**

## Standard curve

The standard curve is for the purpose of illustration only and should not be used to calculate unknowns. A standard curve should be generated each time the assay is performed.

**Storage Instruction**

Store the kit at 4°C.

## Applications

- Quantification

## Publication Reference

- [Mechanism of Fcγ receptor-mediated trogocytosis-based false-positive results in flow cytometry.](#)

Masuda S, Iwasaki S, Tomaru U, Sato J, Kawakami A, Ichijo K, Sogo S, Baba T, Katsumata K, Kasahara M, Ishizu A.  
PLoS One 2012 Dec; 7(12):e52918.

Application: Quan, Human, Serum