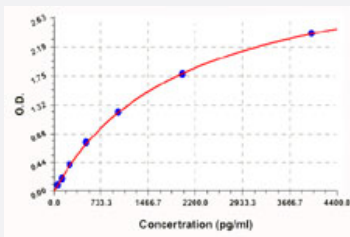


# Cd80 (Mouse) ELISA Kit

Catalog # KA0991      Size 1 Kit

## Applications



The standard curve is for the purpose of illustration only and should not be used to calculate unknowns. A standard curve should be generated each time the assay is performed.

## Specification

<b>Product Description</b>	Cd80 (Mouse) ELISA Kit is a sandwich enzyme immunoassay for the quantitative measurement of mouse Cd80.
<b>Suitable Sample</b>	Cell Culture Supernatant, Tissue Lysate
<b>Sample Volume</b>	100 uL
<b>Label</b>	HRP-conjugated
<b>Detection Method</b>	Colorimetric
<b>Assay Type</b>	Quantitative
<b>Calibration Range</b>	62.5 to 4000 pg/mL
<b>Reactivity</b>	Mouse
<b>Regulation Status</b>	For research use only (RUO)
<b>Quality Control Testing</b>	Standard curve The standard curve is for the purpose of illustration only and should not be used to calculate unknowns. A standard curve should be generated each time the assay is performed.
<b>Storage Instruction</b>	Store at 4°C for 6 months, at -20°C for 12 months. Avoid multiple freeze-thaw cycles.

## Applications

- Quantification

## Gene Info — Cd80

Entrez GeneID	<a href="#">12519</a>
Gene Name	Cd80
Gene Alias	B7-1, B7.1, Cd28l, Ly-53, Ly53, MIC17, TS/A-1
Gene Description	CD80 antigen
Gene Ontology	<a href="#">Hyperlink</a>
Other Designations	B7 protein

## Publication Reference

- [The costimulatory genes Cd80 and Cd86 are linked on mouse chromosome 16 and human chromosome 3.](#)  
Reeves RH, Patch D, Sharpe AH, Borriello F, Freeman GJ, Edelhoff S, Distech C.  
Mammalian Genome: Official Journal of the International Mammalian Genome Society 1997 Aug; 8(8):581.
- [Genomic organization and chromosomal location of the human gene encoding the B-lymphocyte activation antigen B7.](#)  
Selvakumar A, Mohanraj BK, Eddy RL, Shows TB, White PC, Dupont B.  
Immunogenetics 1992 Jan; 36(3):175.