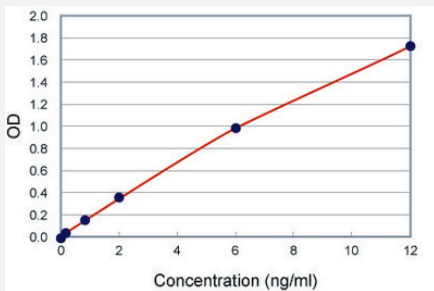


GH (Human) ELISA Kit

Catalog # KA0521

Size 1 Kit

Applications



The standard curve is for the purpose of illustration only and should not be used to calculate unknowns. A standard curve should be generated each time the assay is performed.

Specification

Product Description	GH (Human) High sensitivity ELISA Kit is a sandwich enzyme immunoassay for the quantitative measurement of GH.
Suitable Sample	Serum
Sample Volume	50 μ L
Label	HRP-conjugate
Detection Method	Colorimetric
Assay Type	Quantitative
Calibration Range	0.1 to 12 ng/mL
Limit of Detection	0.1 ng/mL
Reactivity	Human
Regulation Status	For research use only (RUO)
Quality Control Testing	Standard curve The standard curve is for the purpose of illustration only and should not be used to calculate unknowns. A standard curve should be generated each time the assay is performed.

Storage Instruction

Store the kit at 4°C.

Applications

- Quantification

Publication Reference

- [The receptor binding properties of the 20K variant of human growth hormone explain its discrepant insulin-like and growth promoting activities.](#)

Smal J, Closset J, Hennen G, De Meyts P.

Biochemical and Biophysical Research Communications 1986 Jan; 134(1):159.

Application: Quant, Human, Rat, IM-9 lymphocytes, Rat adipocytes

- [Human pituitary growth hormone \(hGH\) therapy in growth hormone deficiency.](#)

Frasier SD.

Endocrine Reviews 1983 Apr; 4(2):155.