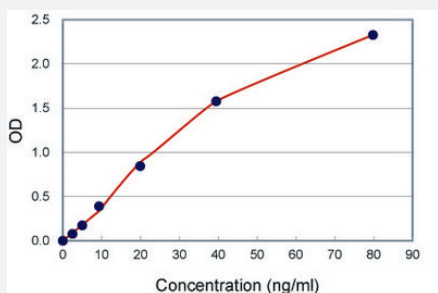


SAA (Human) ELISA Kit

Catalog # KA0518 Size 1 Kit

Applications



The standard curve is for the purpose of illustration only and should not be used to calculate unknowns. A standard curve should be generated each time the assay is performed.

Specification

Product Description	SAA (Human) ELISA Kit is a sandwich enzyme immunoassay for the quantitative measurement of human SAA.
Suitable Sample	Cell Culture Supernatant, Plasma, Serum
Sample Volume	100 μ L
Label	HRP-conjugate
Detection Method	Colorimetric
Assay Type	Quantitative
Intra-Assay	4.00%
Inter-Assay	7.90%
Spiking Recovery	Serum: 104.00%, Plasma: 104.80%, Cell Culture Supernatant: 98.20%
Calibration Range	1.1 to 80 ng/mL
Limit of Detection	1.1 ng/mL
Reactivity	Human

Regulation Status	For research use only (RUO)
Quality Control Testing	Standard curve The standard curve is for the purpose of illustration only and should not be used to calculate unknowns. A standard curve should be generated each time the assay is performed.
Storage Instruction	Store the kit at 4°C.

Applications

- Quantification

Publication Reference

- [Changes in thromboinflammatory profiles across the generations of transcatheter aortic heart valves.](#)

Sexton T, Alkhasova M, de Beer M, Lynch D, Smyth S.

Journal of Thrombosis and Thrombolysis 2019 Feb; 47(2).

Application: Quant, Human, Plasma from patients with transcatheter aortic valve replacement

- [Reduction of paraoxonase-1 activity may contribute the qualitative impairment of HDL particles in patients with type 2 diabetes.](#)

Murakami H, Tanabe J, Tamasawa N, Matsumura K, Yamashita M, Matsuki K, Murakami H, Matsui J, Suda T.

Diabetes Research and Clinical Practice 2013 Jan; 99(1):30.

Application: ELISA, Human, Plasma

- [Recombinant human serum amyloid A \(apoSAAp\) binds cholesterol and modulates cholesterol flux.](#)

Liang JS, Sipe JD.

Journal of Lipid Research 1995 Jan; 36(1):37.

Application: IA, Quant, Human, HepG2 cells

- [Serum amyloid A and high density lipoproteins during the acute phase response.](#)

L L Bausserman, D N Bernier, K P McAdam, P N Herbert.

European Journal of Clinical Investigation 1988 Dec; 18(6):619.

Application: Quant, Human, Human plasma

- [Serum amyloid A protein in familial Mediterranean fever.](#)

Knecht A, de Beer FC, Pras M.

Annals of Internal Medicine 1985 Jan; 102(1):71.

Application: Quant, Human, Human serum