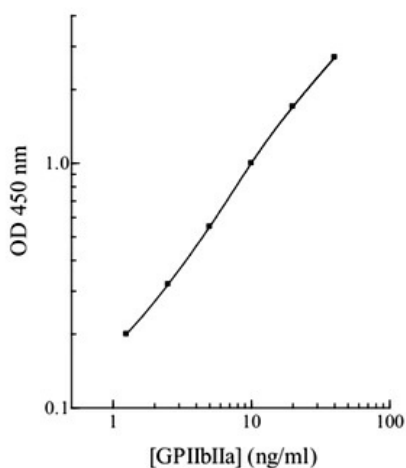


ITGA2B/ITGB3 (Human) ELISA Kit

Catalog # KA0477

Size 1 Kit

Applications



The standard curve is for the purpose of illustration only and should not be used to calculate unknowns. A standard curve should be generated each time the assay is performed.

Specification

Product Description	ITGA2B/ITGB3 (Human) ELISA Kit is a sandwich enzyme immunoassay for the quantitative measurement of human ITGA2B/ITGB3.
Suitable Sample	Cell Lysate, Plasma, Platelet
Sample Volume	50 μ L
Label	Peroxidase-conjugated
Detection Method	Colorimetric
Assay Type	Quantitative
Intra-Assay	4.70%
Inter-Assay	7.70%
Spiking Recovery	99.00%
Calibration Range	1.25 to 40 ng/mL

Reactivity	Human
Regulation Status	For research use only (RUO)
Quality Control Testing	Standard curve The standard curve is for the purpose of illustration only and should not be used to calculate unknowns. A standard curve should be generated each time the assay is performed.
Storage Instruction	Store components of the kit at 4°C or -20°C as described in the protocol.

Applications

- Quantification

Publication Reference

- [The structural bases of integrin-ligand interactions.](#)
Kuhn K, Eble J.
Trends in Cell Biology 1994 Jul; 4(7):256.
- [Platelet membrane glycoproteins: functions in cellular interactions.](#)
Kieffer N, Phillips DR.
Annual Review of Cell Biology 1990 Nov; 6:329.
- [Glanzmann's thrombasthenia: the spectrum of clinical disease.](#)
George JN, Caen JP, Nurden AT.
Blood 1990 Apr; 75(7):1383.