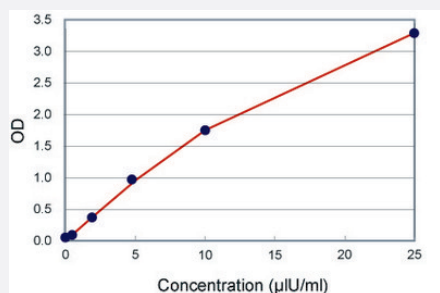


# TSH (Human) ELISA Kit

Catalog # KA0196      Size 1 Kit

## Applications



The standard curve is for the purpose of illustration only and should not be used to calculate unknowns. A standard curve should be generated each time the assay is performed.

## Specification

<b>Product Description</b>	TSH (Human) ELISA Kit is a sandwich enzyme immunoassay for the quantitative measurement of thyroid stimulating hormone.
<b>Suitable Sample</b>	Serum
<b>Sample Volume</b>	100 µL
<b>Label</b>	HRP-conjugate
<b>Detection Method</b>	Colorimetric
<b>Assay Type</b>	Quantitative
<b>Intra-Assay</b>	4.03%
<b>Inter-Assay</b>	7.33%
<b>Spiking Recovery</b>	98.90%
<b>Calibration Range</b>	0 to 25 uIU/mL
<b>Limit of Detection</b>	0.2 uIU/mL
<b>Reactivity</b>	Human

<b>Regulation Status</b>	For research use only (RUO)
<b>Quality Control Testing</b>	Standard curve The standard curve is for the purpose of illustration only and should not be used to calculate unknowns. A standard curve should be generated each time the assay is performed.
<b>Storage Instruction</b>	Store the kit at 4°C.

## Applications

- Quantification