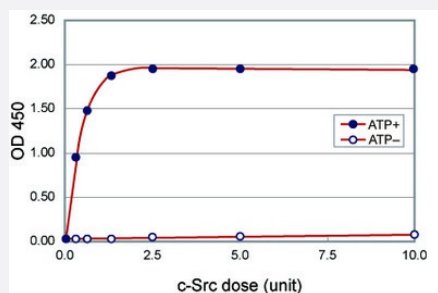


c-Src Kinase (Human) Assay/Inhibitor Screening Assay Kit

Catalog # KA0058

Size 1 Kit

Applications



Dose dependent curve of recombinant c-Src catalytic domain enzyme reaction.

Specification

Product Description

c-Src Kinase (Human) Assay/Inhibitor Screening Assay Kit is a single-site, non-quantitative immunoassay for kinase activity of recombinant catalytic domain of c-Src. Plates are pre-coated with a newly designed "Tyrosine kinase-binding module-1", which can easily bind recombinant catalytic domain of c-Src, subsequently activate c-Src kinase activity on a microtiter plate. The detector antibody is PY-39, an antibody that specifically detects the phosphotyrosine residue on recombinant catalytic domain of c-Src itself, which means that this kit measures the intensity of autophosphorylation of c-Src catalytic domain.

Assay Type

Quantitative

Reactivity

Human

Regulation Status

For research use only (RUO)

Quality Control Testing

Dose dependent curve
Dose dependent curve of recombinant c-Src catalytic domain enzyme reaction.

Storage Instruction

Store the kit at 4°C.

Note

SRC (Human) Recombinant Protein (Cat# P6990) is a Src positive control designed to use for c-Src Kinase (Human) Assay/Inhibitor Screening Assay Kit (Cat# KA0058).

Applications

- Functional Study

Gene Info — SRC

Entrez GeneID	6714
Gene Name	SRC
Gene Alias	ASV, SRC1, c-SRC, p60-Src
Gene Description	v-src sarcoma (Schmidt-Ruppin A-2) viral oncogene homolog (avian)
Omim ID	190090
Gene Ontology	Hyperlink
Gene Summary	This gene is highly similar to the v-src gene of Rous sarcoma virus. This proto-oncogene may play a role in the regulation of embryonic development and cell growth. The protein encoded by this gene is a tyrosine-protein kinase whose activity can be inhibited by phosphorylation by c-SRC kinase. Mutations in this gene could be involved in the malignant progression of colon cancer. Two transcript variants encoding the same protein have been found for this gene. [provided by RefSeq]
Other Designations	OTTHUMP00000174476 OTTHUMP00000174477 proto-oncogene tyrosine-protein kinase SRC protooncogene SRC, Rous sarcoma tyrosine kinase pp60c-src tyrosine-protein kinase SRC-1

Publication Reference

- [Berberine Reduces the Metastasis of Chondrosarcoma by Modulating the \$\alpha\beta3\$ Integrin and the PKC \$\delta\$, c-Src, and AP-1 Signaling Pathways.](#)

Chi-Ming Wu, Te-Mao Li, Tzu-Wei Tan, Yi-Chin Fong, Chih-Hsin Tang.

Evidence-Based Complementary and Alternative Medicine 2013 Aug; 2013:423164.

Application: Func, KA, Human, JJ012, SW1353 cells

- [Lipoteichoic acid enhances IL-6 production in human synovial fibroblasts via TLR2 receptor, PKCdelta and c-Src dependent pathways.](#)

Chih-Hsin Tang, Chin-Jung Hsu, Wei-Hung Yang, Yi-Chin Fong.

Biochemical Pharmacology 2010 Jun; 79(11):1648.

Application: Func, KA, Human, Human synovial fibroblasts

Pathway

- [Adherens junction](#)
- [Endocytosis](#)
- [Epithelial cell signaling in Helicobacter pylori infection](#)
- [ErbB signaling pathway](#)
- [Focal adhesion](#)
- [Gap junction](#)
- [GnRH signaling pathway](#)
- [Tight junction](#)
- [VEGF signaling pathway](#)

Disease

- [Genetic Predisposition to Disease](#)
- [HIV Infections](#)
- [Thyroid Neoplasms](#)