

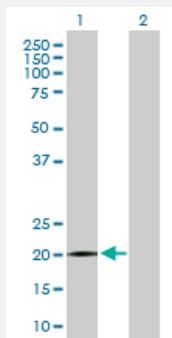
MaxPab®

SPANXB1 purified MaxPab mouse polyclonal antibody (B01P)

Catalog # H00728695-B01P

Size 50 ug

Applications

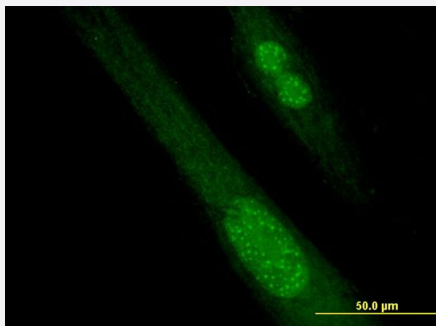


Western Blot (Transfected lysate)

Western Blot analysis of SPANXB1 expression in transfected 293T cell line ([H00728695-T01](#)) by SPANXB1 MaxPab polyclonal antibody.

Lane 1: SPANXB1 transfected lysate(11.33 KDa).

Lane 2: Non-transfected lysate.



Immunofluorescence

Immunofluorescence of purified MaxPab antibody to SPANXB1 on Hs 181.Tes cell. [antibody concentration 10 ug/ml]

Specification

Product Description	Mouse polyclonal antibody raised against a full-length human SPANXB1 protein.
Immunogen	SPANXB1 (NP_115850.1, 1 a.a. ~ 103 a.a) full-length human protein.
Sequence	MGQQSSVRRLKRSVPCESNEANEANEANKTMPETPTGDSDPQPAPKKMKTSSESSTILVVRYYRNVKRTSPEELVNDHARENRPDQMEEEFIEITTPPKK
Host	Mouse
Reactivity	Human
Quality Control Testing	Antibody reactive against mammalian transfected lysate.

Storage Buffer

In 1x PBS, pH 7.4

Storage Instruction

Store at -20°C or lower. Aliquot to avoid repeated freezing and thawing.

Applications

- Western Blot (Transfected lysate)

Western Blot analysis of SPANXB1 expression in transfected 293T cell line ([H00728695-T01](#)) by SPANXB1 MaxPab polyclonal antibody.

Lane 1: SPANXB1 transfected lysate(11.33 KDa).

Lane 2: Non-transfected lysate.

[Protocol Download](#)

- Immunofluorescence

Immunofluorescence of purified MaxPab antibody to SPANXB1 on Hs 181.Tes cell. [antibody concentration 10 ug/ml]

Gene Info — SPANXB1

Entrez GeneID[728695](#)**GeneBank Accession#**[NM_032461.2](#)**Protein Accession#**[NP_115850.1](#)**Gene Name**

SPANXB1

Gene Alias

B1, SPANX-B, SPANXB

Gene Description

SPANX family, member B1

Omim ID[300669](#)**Gene Ontology**[Hyperlink](#)

Gene Summary

Temporally regulated transcription and translation of several testis-specific genes is required to initiate the series of molecular and morphological changes in the male germ cell lineage necessary for the formation of mature spermatozoa. This gene is a member of the SPANX family of cancer/testis-associated genes, which are located in a cluster on chromosome X. The SPANX genes encode differentially expressed testis-specific proteins that localize to various subcellular compartments. This particular gene maps to chromosome X in a head-to-tail orientation with SPANX family member B2, which appears to be a duplication of the B1 locus. The SPANXB genes are unique members of this gene family, since they contain an additional 18 nt in their coding region compared to the majority of family members. Although the protein encoded by this gene contains consensus nuclear localization signals, the major site for subcellular localization of expressed protein is in the cytoplasmic droplets of ejaculated spermatozoa. This protein provides a biochemical marker for studying the unique structures in spermatozoa, while attempting to further define its role in spermatogenesis. [provided by RefSeq]

Other Designations

OTTHUMP00000024171|nuclear-associated protein SPAN-Xb|sperm protein associated with the nucleus, X chromosome, family member B1

Publication Reference

- [Cancer Testis Antigen Promotes Triple Negative Breast Cancer Metastasis and is Traceable in the Circulating Extracellular Vesicles.](#)

Kannan A, Philley JV, Hertweck KL, Ndetan H, Singh KP, Sivakumar S, Wells RB, Vadlamudi RK, Dasgupta S.

Scientific Reports 2019 Aug; 9(1):11632.

Application: IP, IP-WB, WB-Tr, Human, SUM-159, MDA-MB-231, MCF-7, HMLE cells

Disease

- [Azoospermia](#)
- [Infertility](#)
- [Oligospermia](#)