

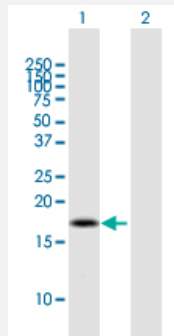
MaxPab®

BOLA2B purified MaxPab mouse polyclonal antibody (B01P)

Catalog # H00654483-B01P

Size 50 ug

Applications



Western Blot (Transfected lysate)

Western Blot analysis of BOLA2B expression in transfected 293T cell line ([H00654483-T01](#)) by BOLA2B MaxPab polyclonal antibody.

Lane 1: BOLA2B transfected lysate(16.72 KDa).

Lane 2: Non-transfected lysate.

Specification

Product Description	Mouse polyclonal antibody raised against a full-length human BOLA2B protein.
Immunogen	BOLA2B (AAI53145.1, 1 a.a. ~ 152 a.a) full-length human protein.
Sequence	MASAKSLDRWKARLLEGGSTALTYALVRAEVSFPAEVAPVRQQGSVAGARAGVVSLLGCRSSW TAAMELSAEYLREKLQRDLEAEHVEVEDTLNRCSCSFRVLVVS AKFEGKPLLQRHRLVNACLA EELPHIHAFEQKTLTPDQWARERQK
Host	Mouse
Reactivity	Human
Quality Control Testing	Antibody reactive against mammalian transfected lysate.
Storage Buffer	In 1x PBS, pH 7.4
Storage Instruction	Store at -20°C or lower. Aliquot to avoid repeated freezing and thawing.

Applications

- Western Blot (Transfected lysate)

Western Blot analysis of BOLA2B expression in transfected 293T cell line ([H00654483-T01](#)) by BOLA2B MaxPab polyclonal antibody.

Lane 1: BOLA2B transfected lysate(16.72 KDa).

Lane 2: Non-transfected lysate.

[Protocol Download](#)

Gene Info — BOLA2B

Entrez GeneID [654483](#)

GeneBank Accession# [BC153144.1](#)

Protein Accession# [AAI53145.1](#)

Gene Name BOLA2B

Gene Alias -

Gene Description bolA homolog 2B (E. coli)

Gene Ontology [Hyperlink](#)

Gene Summary This gene is located within a region of a segmental duplication on chromosome 16p. The product of this gene belongs to the eukaryotic subfamily of the BolA-like proteins. This gene encodes the BolA-like protein 2. The BolA-like proteins are widely conserved from prokaryotes to eukaryotes, and these proteins seem to be involved in cell proliferation or cell-cycle regulation. This duplicated region contains a complete copy of the short splice variant of the BOLA2 gene and a partial copy of the long splice variant of the BOLA2 gene. [provided by RefSeq]

Other Designations BolA-like protein 2 member B|bolA-like 2B|bolA-like protein 2B