

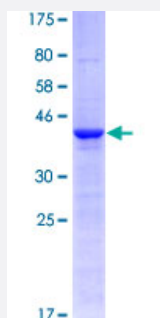
Full-Length

CLLU1OS (Human) Recombinant Protein (P01)

Catalog # H00574016-P01

Size 25 ug, 10 ug

Applications



Specification

Product Description	Human CLLU1OS full-length ORF (AAI53087.1, 1 a.a. - 101 a.a.) recombinant protein with GST-tag at N-terminal.
Sequence	MNKLGHNELKECLKTATDSLQTVQPSISQTCTSYGPALGAPLPGRNEVALLTSLPPNYEISEGKPR AISAYVRAGKGNVTRRRKKTHLGNDGKKEAQEKM
Host	Wheat Germ (in vitro)
Theoretical MW (kDa)	38.06
Preparation Method	in vitro wheat germ expression system
Purification	Glutathione Sepharose 4 Fast Flow
Quality Control Testing	12.5% SDS-PAGE Stained with Coomassie Blue.
Storage Buffer	50 mM Tris-HCl, 10 mM reduced Glutathione, pH=8.0 in the elution buffer.
Storage Instruction	Store at -80°C. Aliquot to avoid repeated freezing and thawing.
Note	Best use within three months from the date of receipt of this protein.

Applications

- Enzyme-linked Immunoabsorbent Assay
- Western Blot (Recombinant protein)
- Antibody Production
- Protein Array

Gene Info — CLLU1OS

Entrez GeneID	574016
---------------	------------------------

GeneBank Accession#	BC153086
---------------------	--------------------------

Protein Accession#	AAI53087.1
--------------------	----------------------------

Gene Name	CLLU1OS
-----------	---------

Gene Alias	-
------------	---

Gene Description	chronic lymphocytic leukemia up-regulated 1 opposite strand
------------------	---

Gene Ontology	Hyperlink
---------------	---------------------------

Other Designations	chronic lymphocytic leukemia up-regulated 1 overlapping strand
--------------------	--