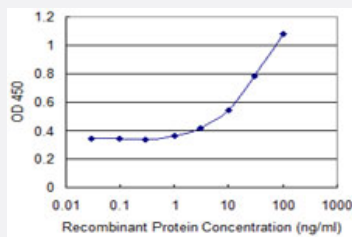


# OR2A2 monoclonal antibody (M01), clone 4B10

Catalog # H00442361-M01

Size 100 ug

## Applications



### Sandwich ELISA (Recombinant protein)

Detection limit for recombinant GST tagged OR2A2 is 0.3 ng/ml as a capture antibody.

## Specification

<b>Product Description</b>	Mouse monoclonal antibody raised against a partial recombinant OR2A2.
<b>Immunogen</b>	OR2A2 (NP_001005480.1, 261 a.a. ~ 318 a.a) partial recombinant protein with GST tag. MW of the GST tag alone is 26 KDa.
<b>Sequence</b>	PDSNQREEQEKM LSLFHSVLNPMLNPLIYSLRNAQLKGALHRALQKRSMRTVYGLCL
<b>Host</b>	Mouse
<b>Reactivity</b>	Human
<b>Isotype</b>	IgG2a Kappa
<b>Quality Control Testing</b>	Antibody Reactive Against Recombinant Protein.
<b>Storage Buffer</b>	In 1x PBS, pH 7.4
<b>Storage Instruction</b>	Store at -20°C or lower. Aliquot to avoid repeated freezing and thawing.

## Applications

- Sandwich ELISA (Recombinant protein)

Detection limit for recombinant GST tagged OR2A2 is 0.3 ng/ml as a capture antibody.

[Protocol Download](#)

- ELISA

## Gene Info — OR2A2

Entrez GeneID [442361](#)

GeneBank Accession# [NM\\_001005480](#)

Protein Accession# [NP\\_001005480.1](#)

Gene Name OR2A2

Gene Alias OR2A17P, OR2A2P, OR7-11, OST008

Gene Description olfactory receptor, family 2, subfamily A, member 2

Gene Ontology [Hyperlink](#)

**Gene Summary** Olfactory receptors interact with odorant molecules in the nose, to initiate a neuronal response that triggers the perception of a smell. The olfactory receptor proteins are members of a large family of G-protein-coupled receptors (GPCR) arising from single coding-exon genes. Olfactory receptors share a 7-transmembrane domain structure with many neurotransmitter and hormone receptors and are responsible for the recognition and G protein-mediated transduction of odorant signals. The olfactory receptor gene family is the largest in the genome. The nomenclature assigned to the olfactory receptor genes and proteins for this organism is independent of other organisms. [provided by RefSeq]

**Other Designations** olfactory receptor OR7-11|olfactory receptor, family 2, subfamily A, member 17 pseudogene|olfactory receptor, family 2, subfamily A, member 2 pseudogene

## Pathway

- [Olfactory transduction](#)