

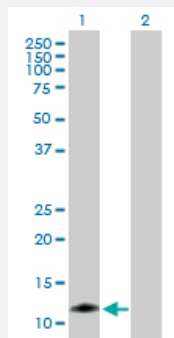
MaxPab®

INCA purified MaxPab mouse polyclonal antibody (B01P)

Catalog # H00440068-B01P

Size 50 ug

Applications



Western Blot (Transfected lysate)

Western Blot analysis of CARD17 expression in transfected 293T cell line ([H00440068-T01](#)) by CARD17 MaxPab polyclonal antibody.

Lane 1: INCA transfected lysate(12.1 KDa).

Lane 2: Non-transfected lysate.

Specification

Product Description	Mouse polyclonal antibody raised against a full-length human INCA protein.
Immunogen	INCA (NP_001007233.1, 1 a.a. ~ 110 a.a) full-length human protein.
Sequence	MADKVLKEKRKQFIRSVGEGTINGLLGELLETRVLSQEEIENKCNATVMDKARALLDSVIRKGAP ACQCITYICEEDSHLAGTLGLSAGPTSGNHLTTQDSQVLPS
Host	Mouse
Reactivity	Human
Quality Control Testing	Antibody reactive against mammalian transfected lysate.
Storage Buffer	In 1x PBS, pH 7.4
Storage Instruction	Store at -20°C or lower. Aliquot to avoid repeated freezing and thawing.

Applications

- Western Blot (Transfected lysate)

Western Blot analysis of CARD17 expression in transfected 293T cell line ([H00440068-T01](#)) by CARD17 MaxPab polyclonal antibody.

Lane 1: INCA transfected lysate(12.1 KDa).

Lane 2: Non-transfected lysate.

[Protocol Download](#)

Gene Info — CARD17

Entrez GeneID	440068
---------------	------------------------

GeneBank Accession#	NM_001007232.1
---------------------	--------------------------------

Protein Accession#	NP_001007233.1
--------------------	--------------------------------

Gene Name	CARD17
-----------	--------

Gene Alias	INCA
------------	------

Gene Description	caspase recruitment domain family, member 17
------------------	--

Omim ID	609490
---------	------------------------

Gene Ontology	Hyperlink
---------------	---------------------------

Gene Summary	O
--------------	---

Other Designations	Inhibitory CARD inhibitory caspase recruitment domain (CARD) protein
--------------------	--