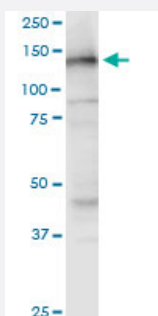


# NOMO3 monoclonal antibody (M03), clone 5A7

Catalog # H00408050-M03

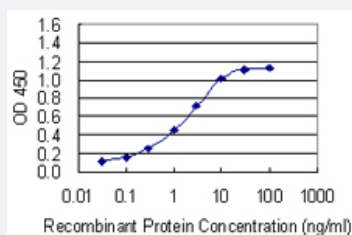
Size 100 ug

## Applications



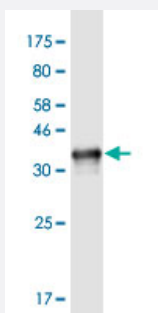
### Western Blot (Cell lysate)

NOMO3 monoclonal antibody (M03), clone 5A7. Western Blot analysis of NOMO3 expression in Jurkat.



### Sandwich ELISA (Recombinant protein)

Detection limit for recombinant GST tagged NOMO3 is 0.03 ng/ml as a capture antibody.



Western Blot detection against Immunogen (33.22 KDa) .

## Specification

### Product Description

Mouse monoclonal antibody raised against a partial recombinant NOMO3.

<b>Immunogen</b>	NOMO3 (NP_001004067.1, 966 a.a. ~ 1033 a.a) partial recombinant protein with GST tag. MW of the GST tag alone is 26 KDa.
<b>Sequence</b>	TVSSLNGEPEQGVAMEAVGQNDCSIYGEDTVTDEEGKFRLRGLLPGCVYHVQLKAEGNDHIERA LPHH
<b>Host</b>	Mouse
<b>Reactivity</b>	Human
<b>Interspecies Antigen Sequence</b>	Mouse (96); Rat (96)
<b>Isotype</b>	IgG2a Kappa
<b>Quality Control Testing</b>	Antibody Reactive Against Recombinant Protein. Western Blot detection against Immunogen (33.22 KDa) .
<b>Storage Buffer</b>	In 1x PBS, pH 7.4
<b>Storage Instruction</b>	Store at -20°C or lower. Aliquot to avoid repeated freezing and thawing.

## Applications

- Western Blot (Cell lysate)

NOMO3 monoclonal antibody (M03), clone 5A7. Western Blot analysis of NOMO3 expression in Jurkat.

[Protocol Download](#)

- Western Blot (Recombinant protein)

[Protocol Download](#)

- Sandwich ELISA (Recombinant protein)

Detection limit for recombinant GST tagged NOMO3 is 0.03 ng/ml as a capture antibody.

[Protocol Download](#)

- ELISA

## Gene Info — NOMO3

Entrez GeneID [408050](#)

GeneBank Accession#	<a href="#">NM_001004067</a>
Protein Accession#	<a href="#">NP_001004067.1</a>
Gene Name	NOMO3
Gene Alias	Nomo
Gene Description	NODAL modulator 3
Omim ID	<a href="#">609159</a>
Gene Ontology	<a href="#">Hyperlink</a>
Gene Summary	<p>This gene encodes a protein originally thought to be related to the collagenase gene family. This gene is one of three highly similar genes in a duplicated region on the short arm of chromosome 16. These three genes encode closely related proteins that may have the same function. The protein encoded by one of these genes has been identified as part of a protein complex that participates in the Nodal signaling pathway during vertebrate development. Mutations in ABCC6, which is located nearby, rather than mutations in this gene are associated with pseudoxanthoma elasticum. [provided by RefSeq]</p>
Other Designations	nodal modulator 3 pM5 protein, middle copy