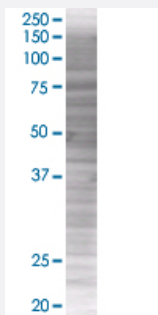


# SHC4 293T Cell Transient Overexpression Lysate(Denatured)

Catalog # H00399694-T01

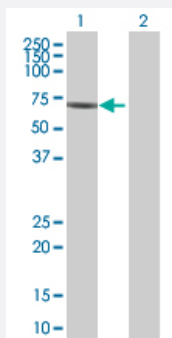
Size 100 uL

## Applications



### SDS-PAGE Gel

SHC4 transfected lysate.



### Western Blot

Lane 1: SHC4 transfected lysate ( 68.7 KDa)

Lane 2: Non-transfected lysate.

## Specification

**Transfected Cell Line** 293T

**Plasmid** pCMV-SHC4 full-length

**Host** Human

**Theoretical MW (kDa)** 69.41

**Quality Control Testing** Transient overexpression cell lysate was tested with Anti-SHC4 antibody ([H00399694-B01](#)) by Western Blots.  
SDS-PAGE Gel  
SHC4 transfected lysate.  
Western Blot  
Lane 1: SHC4 transfected lysate ( 68.7 KDa)  
Lane 2: Non-transfected lysate.

**Storage Buffer**

1X Sample Buffer (50 mM Tris-HCl, 2% SDS, 10% glycerol, 300 mM 2-mercaptoethanol, 0.01% Bromophenol blue)

**Storage Instruction**

Store at -80°C. Aliquot to avoid repeated freezing and thawing.

## Applications

- Western Blot

## Gene Info — SHC4

**Entrez GeneID**[399694](#)**GeneBank Accession#**[BC033907](#)**Protein Accession#**[AAH33907](#)**Gene Name**

SHC4

**Gene Alias**

MGC34023, RaLP, SHCD

**Gene Description**

SHC (Src homology 2 domain containing) family, member 4

**Gene Ontology**[Hyperlink](#)**Gene Summary**

O

**Other Designations**

rai-like protein

## Pathway

- [Chemokine signaling pathway](#)
- [Chronic myeloid leukemia](#)
- [ErbB signaling pathway](#)
- [Focal adhesion](#)
- [Glioma](#)
- [Insulin signaling pathway](#)
- [Natural killer cell mediated cytotoxicity](#)

- [Neurotrophin signaling pathway](#)

## Disease

- [Tobacco Use Disorder](#)