

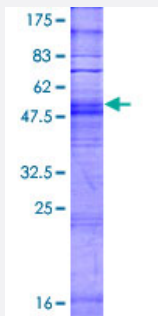
Full-Length

OR4K13 (Human) Recombinant Protein (P01)

Catalog # H00390433-P01

Size 25 ug, 10 ug

Applications



Specification

Product Description

Human OR4K13 full-length ORF (NP_001004714.1, 1 a.a. - 304 a.a.) recombinant protein with GST-tag at N-terminal.

Sequence

MERANHSVVSEFILLGLSKSQNLQILFFLGFSVVVFGVILGNLLILVTVTDFSLHTPMYFLLSNLSCI
DMILASFATPKMIVDFLRERKTISWWGCYSQMFFMHLLGGSEMMLLVAMAIDRYVAICKPLHYMTI
MSPRVL TGLLLSSYAVGVFVHSSSQMAFMLTLPFCGPNVIDSFFCDLPLVIKLACKDTYILQLLVIAD
SGLLSLVCFLLLLVSYGVII FSVRYRAASRSSKAFSTLSAHITVTLFFAPCVFIYVWPFSRYSVDKIL
SVFYTIFTPLLNP IYTLRNQEVKAAIKKRLCI

Host

Wheat Germ (in vitro)

Theoretical MW (kDa)

60.7

Preparation Method

[in vitro wheat germ expression system](#)

Purification

Glutathione Sepharose 4 Fast Flow

Quality Control Testing

12.5% SDS-PAGE Stained with Coomassie Blue.

Storage Buffer

50 mM Tris-HCl, 10 mM reduced Glutathione, pH=8.0 in the elution buffer.

Storage Instruction

Store at -80°C. Aliquot to avoid repeated freezing and thawing.

Note

Best use within three months from the date of receipt of this protein.

Applications

- Enzyme-linked Immunoabsorbent Assay
- Western Blot (Recombinant protein)
- Antibody Production
- Protein Array

Gene Info — OR4K13

Entrez GeneID [390433](#)

GeneBank Accession# [NM_001004714.1](#)

Protein Accession# [NP_001004714.1](#)

Gene Name OR4K13

Gene Alias OR14-27

Gene Description olfactory receptor, family 4, subfamily K, member 13

Gene Ontology [Hyperlink](#)

Gene Summary Olfactory receptors interact with odorant molecules in the nose, to initiate a neuronal response that triggers the perception of a smell. The olfactory receptor proteins are members of a large family of G-protein-coupled receptors (GPCR) arising from single coding-exon genes. Olfactory receptors share a 7-transmembrane domain structure with many neurotransmitter and hormone receptors and are responsible for the recognition and G protein-mediated transduction of odorant signals. The olfactory receptor gene family is the largest in the genome. The nomenclature assigned to the olfactory receptor genes and proteins for this organism is independent of other organisms. [provided by RefSeq]

Other Designations olfactory receptor OR14-27

Pathway

- [Olfactory transduction](#)