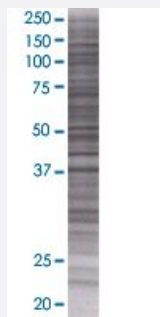


LOC388503 293T Cell Transient Overexpression Lysate(Denatured)

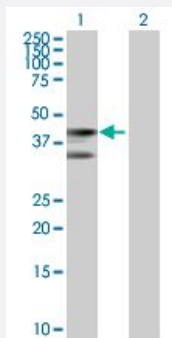
Catalog # H00388503-T01 Size 100 uL

Applications



SDS-PAGE Gel

LOC388503 transfected lysate.



Western Blot

Lane 1: LOC388503 transfected lysate (39.93 KDa)

Lane 2: Non-transfected lysate.

Specification

Transfected Cell Line	293T
Plasmid	pCMV-LOC388503 full-length
Host	Human
Theoretical MW (kDa)	39.93

Quality Control Testing

Transient overexpression cell lysate was tested with Anti-LOC388503 antibody ([H00388503-B01](#)) by Western Blots.
SDS-PAGE Gel
LOC388503 transfected lysate.
Western Blot
Lane 1: LOC388503 transfected lysate (39.93 KDa)
Lane 2: Non-transfected lysate.

Storage Buffer

1X Sample Buffer (50 mM Tris-HCl, 2% SDS, 10% glycerol, 300 mM 2-mercaptoethanol, 0.01% Bromophenol blue)

Storage Instruction

Store at -80°C. Aliquot to avoid repeated freezing and thawing.

Applications

- Western Blot

Gene Info — LOC388503

Entrez GeneID

[388503](#)

GeneBank Accession#

[BC148837](#)

Protein Accession#

[AA48838.1](#)

Gene Name

LOC388503

Gene Alias

-

Gene Description

similar to Complement C3 precursor

Gene Ontology

[Hyperlink](#)

Other Designations

hypothetical protein LOC388503