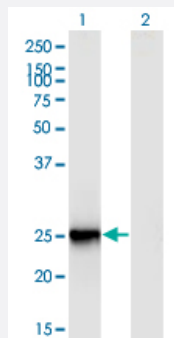


FIGLA monoclonal antibody (M03), clone 6A10

Catalog # H00344018-M03

Size 100 ug

Applications

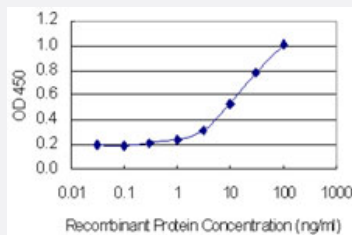


Western Blot (Transfected lysate)

Western Blot analysis of FIGLA expression in transfected 293T cell line by FIGLA monoclonal antibody (M03), clone 6A10.

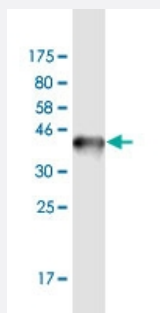
Lane 1: FIGLA transfected lysate (Predicted MW: 24.09 KDa).

Lane 2: Non-transfected lysate.



Sandwich ELISA (Recombinant protein)

Detection limit for recombinant GST tagged FIGLA is 0.3 ng/ml as a capture antibody.



Western Blot detection against Immunogen (37.84 KDa) .

Specification

Product Description

Mouse monoclonal antibody raised against a partial recombinant FIGLA.

| | |
|--------------------------------------|---|
| Immunogen | FIGLA (NP_001004311.1, 110 a.a. ~ 219 a.a) partial recombinant protein with GST tag. MW of the GST tag alone is 26 KDa. |
| Sequence | ATEYIQVLSDLLEGAKDSKKQDPDEQSYNNNTSESHTSSARQLSRNITQHISCAFGGLKNEEEGPW ADGGSGEPAHACRHSVMSTTEIISPTRSLDRFPEVELLSHRLPQV |
| Host | Mouse |
| Reactivity | Human |
| Interspecies Antigen Sequence | Mouse (53); Rat (58) |
| Isotype | IgG2a Kappa |
| Quality Control Testing | Antibody Reactive Against Recombinant Protein. Western Blot detection against Immunogen (37.84 KDa) . |
| Storage Buffer | In 1x PBS, pH 7.4 |
| Storage Instruction | Store at -20°C or lower. Aliquot to avoid repeated freezing and thawing. |

Applications

- Western Blot (Transfected lysate)

Western Blot analysis of FIGLA expression in transfected 293T cell line by FIGLA monoclonal antibody (M03), clone 6A10.

Lane 1: FIGLA transfected lysate (Predicted MW: 24.09 KDa).

Lane 2: Non-transfected lysate.

[Protocol Download](#)

- Western Blot (Recombinant protein)

[Protocol Download](#)

- Sandwich ELISA (Recombinant protein)

Detection limit for recombinant GST tagged FIGLA is 0.3 ng/ml as a capture antibody.

[Protocol Download](#)

- ELISA

Gene Info — FIGLA

| | |
|---------------------|---|
| Entrez GeneID | 344018 |
| GeneBank Accession# | NM_001004311 |
| Protein Accession# | NP_001004311.1 |
| Gene Name | FIGLA |
| Gene Alias | POF6, bHLHc8 |
| Gene Description | folliculogenesis specific basic helix-loop-helix |
| Omim ID | 608697 |
| Gene Ontology | Hyperlink |
| Gene Summary | This gene encodes a protein that functions in postnatal oocyte-specific gene expression. The protein is a basic helix-loop-helix transcription factor that regulates multiple oocyte-specific genes, including genes involved in folliculogenesis and those that encode the zona pellucida. Mutations in this gene cause premature ovarian failure type 6. [provided by RefSeq] |
| Other Designations | factor in the germline alpha |