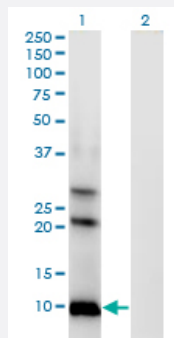


AKR1CL1 monoclonal antibody (M04), clone 4G8

Catalog # H00340811-M04

Size 100 ug

Applications

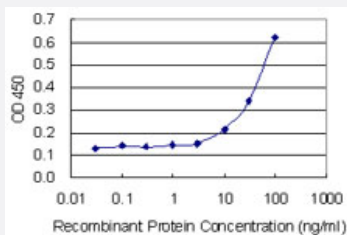


Western Blot (Transfected lysate)

Western Blot analysis of AKR1CL1 expression in transfected 293T cell line by AKR1CL1 monoclonal antibody (M04), clone 4G8.

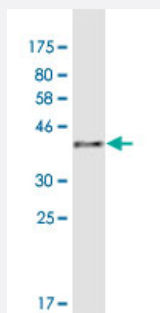
Lane 1: AKR1CL1 transfected lysate (Predicted MW: 14.6 kDa).

Lane 2: Non-transfected lysate.



Sandwich ELISA (Recombinant protein)

Detection limit for recombinant GST tagged AKR1CL1 is 3 ng/ml as a capture antibody.



Western Blot detection against Immunogen (41 kDa) .

Specification

Product Description

Mouse monoclonal antibody raised against a full-length recombinant AKR1CL1.

Immunogen	AKR1CL1 (NP_001007537.1, 1 a.a. ~ 129 a.a) full-length recombinant protein with GST tag. MW of the GST tag alone is 26 KDa.
Sequence	MMTDLKQSHSVRLNDGPFMPVLGFGTYAPDHTPKSQAAEATKVAIDVGFRHIDSAYLYQNEEEV GQAWEDIADGTVKREEIFYTIKLWATFFRAELVHPALERSLKKLGPDYVDLFIIHVPFAMKGSS
Host	Mouse
Reactivity	Human
Isotype	IgG2a Kappa
Quality Control Testing	Antibody Reactive Against Recombinant Protein. Western Blot detection against Immunogen (41 KDa) .
Storage Buffer	In 1x PBS, pH 7.4
Storage Instruction	Store at -20°C or lower. Aliquot to avoid repeated freezing and thawing.

Applications

- Western Blot (Transfected lysate)

Western Blot analysis of AKR1CL1 expression in transfected 293T cell line by AKR1CL1 monoclonal antibody (M04), clone 4G8.

Lane 1: AKR1CL1 transfected lysate (Predicted MW: 14.6 KDa).

Lane 2: Non-transfected lysate.

[Protocol Download](#)

- Western Blot (Recombinant protein)

[Protocol Download](#)

- Sandwich ELISA (Recombinant protein)

Detection limit for recombinant GST tagged AKR1CL1 is 3 ng/ml as a capture antibody.

[Protocol Download](#)

- ELISA

Gene Info — AKR1CL1

Entrez GeneID [340811](#)

GeneBank Accession#	NM_001007536.1
Protein Accession#	NP_001007537.1
Gene Name	AKR1CL1
Gene Alias	FLJ16347
Gene Description	aldo-keto reductase family 1, member C-like 1
Gene Ontology	Hyperlink
Gene Summary	O
Other Designations	protein RAKc