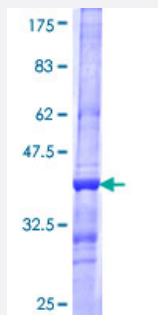


# SLC6A19 (Human) Recombinant Protein (Q01)

Catalog # H00340024-Q01

Size 25 ug, 10 ug

## Applications



## Specification

<b>Product Description</b>	Human SLC6A19 partial ORF ( NP_001003841, 326 a.a. - 414 a.a.) recombinant protein with GST-tag at N-terminal.
<b>Sequence</b>	GFRATQRYDDCFSTNLTILINGFDLPEGNVTQENFVDMQQRCNASDPAAYAQLVFQTCDINAFNSE AVEGTGLAFIVFTEAITKMPLSP
<b>Host</b>	Wheat Germ (in vitro)
<b>Theoretical MW (kDa)</b>	35.53
<b>Preparation Method</b>	<a href="#">in vitro wheat germ expression system</a>
<b>Purification</b>	Glutathione Sepharose 4 Fast Flow
<b>Quality Control Testing</b>	12.5% SDS-PAGE Stained with Coomassie Blue.
<b>Storage Buffer</b>	50 mM Tris-HCl, 10 mM reduced Glutathione, pH=8.0 in the elution buffer.
<b>Storage Instruction</b>	Store at -80°C. Aliquot to avoid repeated freezing and thawing.
<b>Note</b>	Best use within three months from the date of receipt of this protein.

## Applications

- Enzyme-linked Immunoabsorbent Assay
- Western Blot (Recombinant protein)
- Antibody Production
- Protein Array

## Gene Info — SLC6A19

Entrez GeneID	<a href="#">340024</a>
GeneBank Accession#	<a href="#">NM_001003841</a>
Protein Accession#	<a href="#">NP_001003841</a>
Gene Name	SLC6A19
Gene Alias	B0AT1, FLJ20680, FLJ34635, HND
Gene Description	solute carrier family 6 (neutral amino acid transporter), member 19
Omim ID	<a href="#">234500 608893</a>
Gene Ontology	<a href="#">Hyperlink</a>
Gene Summary	This gene encodes a system B(0) transmembrane protein that actively transports most neutral amino acids across the apical membrane of epithelial cells. Mutations in this gene result in Hartnup disorder. [provided by RefSeq]
Other Designations	sodium-dependent amino acid transporter system B0 solute carrier family 6 (neurotransmitter transporter), member 19 solute carrier family 6, member 19 system B0 neutral amino acid transporter

## Disease

- [Genetic Predisposition to Disease](#)
- [Hypertension](#)