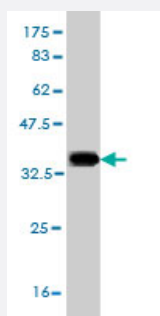


SLC6A19 monoclonal antibody (M01), clone 4F11

Catalog # H00340024-M01

Size 100 ug

Applications



Western Blot detection against Immunogen (35.53 KDa) .

Specification

Product Description	Mouse monoclonal antibody raised against a partial recombinant SLC6A19.
Immunogen	SLC6A19 (NP_001003841, 326 a.a. ~ 414 a.a) partial recombinant protein with GST tag. MW of the GST tag alone is 26 KDa.
Sequence	GFRATQRYDDCFSTNLTILINGFDLPEGNVTQENFVDMQQRNASDPAAYAQLVFQTCDINAFLSE AVEGTGLAFIVFTEAITKMPLSP
Host	Mouse
Reactivity	Human
Isotype	IgG2a Kappa
Quality Control Testing	Antibody Reactive Against Recombinant Protein. Western Blot detection against Immunogen (35.53 KDa) .
Storage Buffer	In 1x PBS, pH 7.4
Storage Instruction	Store at -20°C or lower. Aliquot to avoid repeated freezing and thawing.

Applications

- Western Blot (Recombinant protein)

[Protocol Download](#)

- ELISA

Gene Info — SLC6A19

Entrez GeneID	340024
GeneBank Accession#	NM_001003841
Protein Accession#	NP_001003841
Gene Name	SLC6A19
Gene Alias	B0AT1, FLJ20680, FLJ34635, HND
Gene Description	solute carrier family 6 (neutral amino acid transporter), member 19
Omim ID	234500 608893
Gene Ontology	Hyperlink
Gene Summary	This gene encodes a system B(0) transmembrane protein that actively transports most neutral amino acids across the apical membrane of epithelial cells. Mutations in this gene result in Hartnup disorder. [provided by RefSeq]
Other Designations	sodium-dependent amino acid transporter system B0 solute carrier family 6 (neurotransmitter transporter), member 19 solute carrier family 6, member 19 system B0 neutral amino acid transporter

Publication Reference

- [Expression of proposed methionine transporters along the gastrointestinal tract of pigs and their regulation by dietary methionine sources.](#)

Stella Romanet, Jörg R Aschenbach, Robert Pieper, Jürgen Zentek, John K Htoo, Rose A Whelan, Lucia Mastrototaro.
Genes & Nutrition 2021 Sep; 16(1):14.

Application: WB, Pig, Pig Caecum, Distal Colon, Duodenum, Ileum, Inter-run Calibrator, Middle jejunum, Proximal colon, Proximal Jejunum.

Disease

- [Genetic Predisposition to Disease](#)
- [Hypertension](#)