

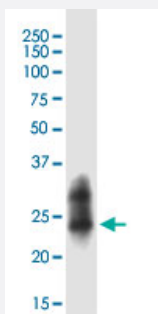
CX Grade

RAB43 monoclonal antibody (M01J), clone 5G4

Catalog # H00339122-M01J

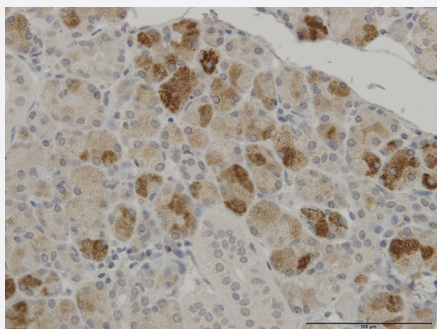
Size 100 ug

Applications



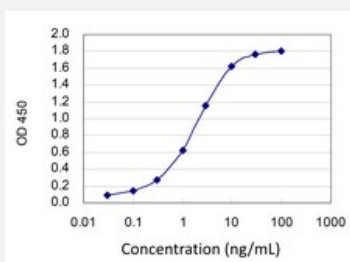
Western Blot (Cell lysate)

RAB43 monoclonal antibody (M01J), clone 5G4. Western Blot analysis of RAB43 expression in HepG2.



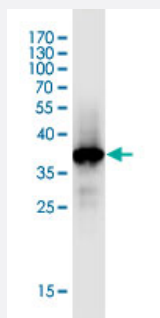
Immunohistochemistry (Formalin/PFA-fixed paraffin-embedded sections)

Immunoperoxidase of monoclonal antibody to RAB43 on formalin-fixed paraffin-embedded human salivary gland. [antibody concentration 3 ug/ml]



Sandwich ELISA (Recombinant protein)

Detection limit for recombinant GST tagged RAB43 is 0.03 ng/ml as a capture antibody.



Western Blot detection against Immunogen (36.52 KDa) .

Specification

Product Description	Mouse monoclonal antibody raised against a partial recombinant RAB43. This product is belong to Cell Culture Grade Antibody (CX Grade).
Immunogen	RAB43 (NP_940892.1, 113 a.a. ~ 210 a.a) partial recombinant protein with GST tag. MW of the GST tag alone is 26 KDa.
Sequence	IEDVRKYAGSNIVQLLIGNKSDLSELREVSLAEQAQSLAEHYDILCAIETSAKDSSNVEEAFLRVATEL IMRHGGPLFSEKSPDHIQLNSKDIGEGWGC
Host	Mouse
Reactivity	Human
Preparation Method	Cell Culture Production
Isotype	IgG2a Kappa
Quality Control Testing	Antibody Reactive Against Recombinant Protein. Western Blot detection against Immunogen (36.52 KDa) .
Storage Buffer	In 1x PBS, pH 7.4
Storage Instruction	Store at -20°C or lower. Aliquot to avoid repeated freezing and thawing.

Applications

- Western Blot (Cell lysate)

RAB43 monoclonal antibody (M01J), clone 5G4. Western Blot analysis of RAB43 expression in HepG2.

[Protocol Download](#)

- Western Blot (Recombinant protein)

[Protocol Download](#)

- Immunohistochemistry (Formalin/PFA-fixed paraffin-embedded sections)

Immunoperoxidase of monoclonal antibody to RAB43 on formalin-fixed paraffin-embedded human salivary gland. [antibody concentration 3 ug/ml]

[Protocol Download](#)

- Sandwich ELISA (Recombinant protein)

Detection limit for recombinant GST tagged RAB43 is 0.03 ng/ml as a capture antibody.

[Protocol Download](#)

- ELISA

Gene Info — RAB43

Entrez GeneID [339122](#)

GeneBank Accession# [NM_198490.1](#)

Protein Accession# [NP_940892.1](#)

Gene Name RAB43

Gene Alias ISY1, MGC90481, RAB11B, RAB41

Gene Description RAB43, member RAS oncogene family

Gene Ontology [Hyperlink](#)

Gene Summary O

Other Designations OTTHUMP00000174306|OTTHUMP00000174307|OTTHUMP00000174308|OTTHUMP00000174309|RAB43 protein