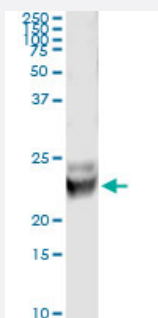


RAB7B (Human) IP-WB Antibody Pair

Catalog # H00338382-PW1

Size 1 Set

Applications



Immunoprecipitation of RAB7B transfected lysate using mouse monoclonal anti-RAB7B and Protein A Magnetic Bead ([U0007](#)), and immunoblotted with rabbit polyclonal anti-RAB7B.

Specification

Product Description

This IP-WB antibody pair set comes with one antibody for immunoprecipitation and another to detect the precipitated protein in western blot.

Reactivity

Human

Quality Control Testing

Immunoprecipitation-Western Blot (IP-WB)

Immunoprecipitation of RAB7B transfected lysate using mouse monoclonal anti-RAB7B and Protein A Magnetic Bead ([U0007](#)), and immunoblotted with rabbit polyclonal anti-RAB7B.

Supplied Product

Antibody pair set content:

1. Antibody pair for IP: mouse monoclonal anti-RAB7B (300 ug)
2. Antibody pair for WB: rabbit polyclonal anti-RAB7B (50 ul)

Storage Instruction

Store reagents of the antibody pair set at -20°C or lower. Please aliquot to avoid repeated freeze thaw cycle. Reagents should be returned to -20°C storage immediately after use.

Applications

- Immunoprecipitation-Western Blot

[Protocol Download](#)

Gene Info — RAB7B

Entrez GeneID	338382
Gene Name	RAB7B
Gene Alias	MGC16212, MGC9726, RAB7
Gene Description	RAB7B, member RAS oncogene family
Gene Ontology	Hyperlink
Gene Summary	O
Other Designations	Ras-related protein Rab-7