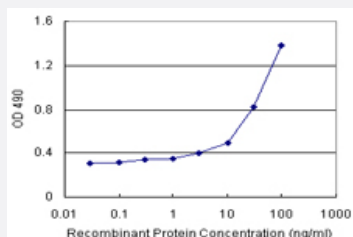


RAB7B (Human) Matched Antibody Pair

Catalog # H00338382-AP11

Size 1 Set

Applications



Sandwich ELISA detection sensitivity ranging from 3 ng/ml to 100 ng/ml.

Specification

Product Description	This antibody pair set comes with a matched antibody pair to detect and quantify the protein level of human RAB7B.
Reactivity	Human
Quality Control Testing	Standard curve using recombinant protein (H00338382-P01) as an analyte. Sandwich ELISA detection sensitivity ranging from 3 ng/ml to 100 ng/ml.
Supplied Product	Antibody pair set content: 1. Capture antibody: rabbit MaxPab® affinity purified polyclonal anti-RAB7B (100 ug) 2. Detection antibody: mouse monoclonal anti-RAB7B, IgG2a Kappa (20 ug) *Reagents are sufficient for at least 1-2 x 96 well plates using recommended protocols.
Storage Instruction	Store reagents of the antibody pair set at -20°C or lower. Please aliquot to avoid repeated freeze thaw cycle. Reagents should be returned to -20°C storage immediately after use.

Applications

- ELISA Pair (Recombinant protein)

[Protocol Download](#)

Gene Info — RAB7B

Entrez GeneID	338382
Gene Name	RAB7B
Gene Alias	MGC16212, MGC9726, RAB7
Gene Description	RAB7B, member RAS oncogene family
Gene Ontology	Hyperlink
Gene Summary	O
Other Designations	Ras-related protein Rab-7