

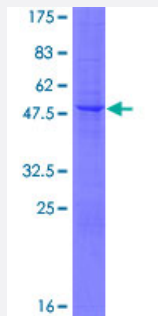
Full-Length

GPIHBP1 (Human) Recombinant Protein (P01)

Catalog # H00338328-P01

Size 25 ug, 10 ug

Applications



Specification

Product Description	Human GPIHBP1 full-length ORF (NP_835466.1, 1 a.a. - 184 a.a.) recombinant protein with GST-tag at N-terminal.
Sequence	MKALGAVLLALLLCGRPGRGQTQQEEEEDEDHGPDDYDEEDEDEVEEEETNRLPGGRSRVLL RCYTCKSLPRDERCNLTQNC SHGQTCTTLAHGNTESGLLTTHSTWCTDSCQPITKTVEGTQVTMT CCQSSLCNVPPWQSSRVQDPTGKGAGGPRGSSETVGAALLNLLAGLGAMGARRP
Host	Wheat Germ (in vitro)
Theoretical MW (kDa)	46.2
Preparation Method	in vitro wheat germ expression system
Purification	Glutathione Sepharose 4 Fast Flow
Quality Control Testing	12.5% SDS-PAGE Stained with Coomassie Blue.
Storage Buffer	50 mM Tris-HCl, 10 mM reduced Glutathione, pH=8.0 in the elution buffer.
Storage Instruction	Store at -80°C. Aliquot to avoid repeated freezing and thawing.
Note	Best use within three months from the date of receipt of this protein.

Applications

- Enzyme-linked Immunoabsorbent Assay
- Western Blot (Recombinant protein)
- Antibody Production
- Protein Array

Gene Info — GPIHBP1

Entrez GeneID [338328](#)

GeneBank Accession# [NM_178172.2](#)

Protein Accession# [NP_835466.1](#)

Gene Name GPIHBP1

Gene Alias GPIHBP1

Gene Description glycosylphosphatidylinositol anchored high density lipoprotein binding protein 1

Gene Ontology [Hyperlink](#)

Gene Summary Dietary fats are packaged by intestine into triglyceride-rich lipoproteins called chylomicrons. The triglycerides in chylomicrons are hydrolyzed by lipoprotein lipase (LPL: MIM 609708) along the luminal surface of capillaries, mainly in heart, skeletal muscle, and adipose tissue. GPIHBP1 is a capillary endothelial cell protein that provides a platform for LPL-mediated processing of chylomicrons (Beigneux et al., 2007 [PubMed 17403372]).[supplied by OMIM]

Other Designations GPI anchored high density lipoprotein binding protein 1|high density lipoprotein-binding protein